



From the President's Desk



Greetings all and welcome to the October edition of the AWSA newsletter

As I write this the spring show season is drawing to a close, and the southern sales circuit is close to complete. There have been excellent exhibitions of White Suffolks at all the major shows and I congratulate all members who made the effort to attend. From those that I attended myself, I know that the breed was well represented in the interbreed ribbons.

The White Suffolk presence in the Elite sale at Adelaide Royal was particularly strong with the obvious highlight the \$26000 paid for the Illoura ram lamb, 090255. Production sales since that time have been strong, obviously reflecting the seasonal and market conditions, but I think also indicative of the position the breed has established within the Australian lamb industry. The outlook for lamb through to at least the medium term continues to be bright, despite the decline in the national sheep flock. I urge you all to continue the type of effort that has put the breed on its current strong footing.

Last month I attended a meeting in Sydney which covered among other things the future of the Sheep CRC information nucleus flocks. The news coming out of the CRC is very exciting, especially with regards the use of genomics and 'marker assisted' information to accelerate the rate of genetic gain. There will be more information coming out in the near future, with possibly the opportunity for more involvement from us as breeders. When this opportunity arises, I urge you to consider it favourably, because I believe it could have huge advantages for those who get involved.

As the end of the year approaches, final planning is underway for the National Conference to be held in Ballarat Next February (14th – 17th). As always this is a great opportunity for you as AWSA members to mix with fellow breeders, learn from informative presentations, and help shape the future of the breed. So mark the dates in your diaries now and make every effort to attend.

Next year sees the World Sheep and Wool Congress held in Sydney, to coincide with the Sydney Royal. Council is currently considering our involvement in this event. One would think that it would be a 'no brainer' that we would be involved, but we are disappointed that the entire event seems to be centred around the merino/wool side of the industry, to the point where it will have concluded by the time breeds such as ours get to the show. There is a strong argument to say that the money this will cost your association may be put to better use focussing on your primary clients, namely Australian lamb producers. Let the council know what you think – give myself or any member of council a ring.

2010 also marks a significant milestone for the AWSA, being the 25th anniversary of its foundation. We plan to mark this event in a quiet way but I am aware that at Hamilton Sheepvention and Perth Royal White Suffolks will be the feature breed, so consider attending them to support the breed.

Finally, I would like to wish all a very safe and happy Christmas, and all the best for the New Year.

*Regards
Steve Milne*

From the Council

AI FORUM

Members should note that Murray Long has collated the discussions on AI held at the last National Conference. This along with a great deal of other information on the subject that Murray has sourced has been attached to the AWSA website for the information of all members.





From the Council cont...

THE INTRODUCTION OF OUTSIDE GENETICS

In 2003, By-law 5 (Flock Book – Appendix Flock Book) was changed, dropping the requirement for 50% Suffolk blood. The subsequent wording of the By-law has led to some confusion as to the eligibility of sheep for exhibition at shows.

Following a recent Federal Council meeting, a clearer definition regarding the inclusion of 'outside genetics' has been inserted into the 2009 AWSA Flock Book.:

5. Flock Book - Introduction of Outside Genetics
The use of outside genetics is restricted to sheep that have a pedigree and are registered with a recognised breed society, or (by application to and approval by the AWSA Council) sheep with a verified full pedigree.
When outside genetics are introduced, the following rules apply:-
1. White Suffolks crossed with Any Other breed will produce progeny that are Appendix White Suffolks
 2. Appendix White Suffolks crossed with White Suffolks will produce progeny that are White Suffolks
 3. Appendix White Suffolks crossed with Appendix White Suffolks will produce progeny that are Appendix White Suffolks
 4. Appendix White Suffolks crossed with Any Other breed will produce progeny that are Any Other Breed

This has in no way changed the rule, but is merely a clarification of the wording. Federal Council believes that this wording of By-law 5 makes it far easier to determine the status of an animal.

In addition, it should be pointed out that any animal born into a White Suffolk flock that is a LAMBPLAN member flock will be identified under a 23 breed code. This does not deem that animal to be a 'White Suffolk' unless its' pedigree satisfies the definition of a White Suffolk under By-law 5.

2010 National Conference

The AWSA 2010 National Conference will be held at the 'Welcome Stranger Holiday Park' in Ballarat on Mon/Tues 15-16th of February.

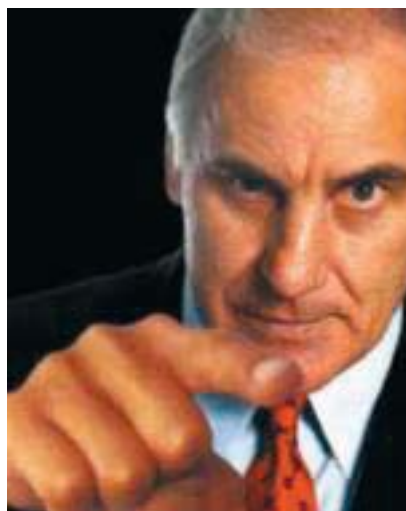
Confirmed speakers include

- Dr Alex Ball - update of Lamb R&D and the CRC Information Nucleus.
- Andrew Hay, National Livestock Manager – Lamb, Coles Supermarkets – Domestic Lamb requirements.
- Sam Gill, Manager of Sheep Genetics – Sheep Genetics update.
- Paul Dolling, Uralba White Suffolks and Geoff Ross from 'Trutest' - the use of Electronic tags
- Simon Beattie – Structural Trait Scoring.
- Lachie Day, Days Whiteface - the process of classing.
- Stefan Spiker – TGRM

and of course "Slammin" Sam Kekovich at the conference dinner on the 16th.

Full details of the program and costs will be sent to all members in November.

Craig Mitchell



"YOU KNOW IT MAKES SENSE; I'M SAM KEKOVICH"



New Member Studs

Name	Location	Flock No	Prefix
Scott & Emma Cameron	Wellington, NSW	729	Supreme
Daniel Griffiths	Karragullen, WA	730	Danhaven
Neil Williams	Orange, NSW	731	Ashburnia
Grant & Bev Broadhurst	Kersbrook, SA	732	Mangalo
Neil & Leanne Frazier	Uralla, NSW	733	New England
Danny & Karen Teskera	Echuca, VIC	734	Roslynmead West
Damien & Dale Maher	Wingeel, VIC	735	Maggivale
Lachlan & Lou Day	Bordertown, SA	736	Days
William Evans	West Wyalong, NSW	737	Tarella
Jenny Roberts	Busselton, WA	738	Ambergate
Jade & Kate Clark	Gerang Gerung, VIC	739	Mallee Glen

Artificial Breeding Techniques

The proceedings from the AI Forum held at the 2009 National Conference, Albury, have been compiled and are available for download from the Association website.

This publication contains procedures and hints provided by members of the Association and should be used in conjunction with advice from your AI technician.

Many thanks to all who contributed to this publication and it can be considered as a living document that is able to be updated so if you have any further ideas or experiences, please let us know through the Association office and we can include them in this publication.

Murray Long

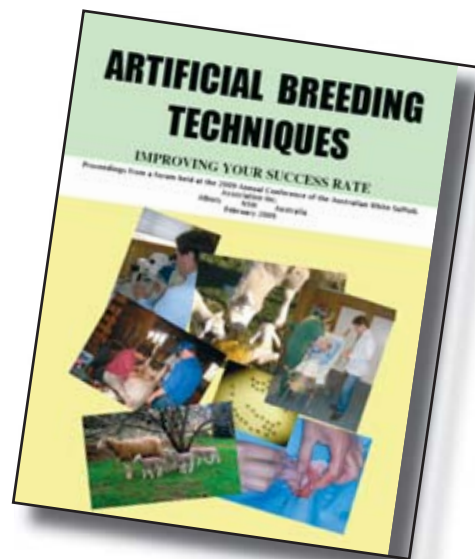


PHOTO COURTESY WINGAMIN STUD - 2009 DROP LAMBS

CLASSIFIED AD

WANTED

1000 White Suffolk ewes for a commercial producer. Using solely for commercial lamb production, CFA ewes or hogget culls, tags removed if you are concerned. Contact Murray, 02 69757210 to coordinate transport.



Hamilton Sheepvention Results 2009

Novice Class - RAM, under 1½ years, shorn.

- 1st Windy Hill
- 2nd Windy Hill
- 3rd Bayview Downs

RAM, under 1½ years, shorn – born in April.

- 1st Waratah
- 2nd Waratah
- 3rd Ramsay Park
- 4th Bundara Downs

RAM, under 1½ years, shorn – born in May

- 1st Woodbridge
- 2nd Bundara Downs
- 3rd Ramsay Park
- 4th Gemini

RAM, under 1½ years, shorn – born in June

- 1st Gemini
- 2nd Glenarbian
- 3rd Duenclyn
- 4th Gemini

RAM, under 1½ years, shorn – born in July.

- 1st Duenclyn
- 2nd Ramsay Park
- 3rd Wingamin

RAM, under 1½ years, shorn
– born after 1st August

- 1st Somerset
- 2nd Days Whiteface
- 3rd Adalinda

PAIR OF RAMS, under 1½ years, shorn.

- 1st Waratah
- 2nd Bundara Downs
- 3rd Gemini



PHOTO COURTESY OF WINGAMIN STUD

highlights

**Champion Ram
WOODBIDGE**

**Reserve Champion Ram
WARATAH**



CHAMPION RAM AND SUPREME CHAMPION RAM
- "WOODBIDGE" STUD HELD BY PENNY HOLMES.



Hamilton Sheepvention Results 2009 cont..

RAM LAMB, born since 1st April,
year of the Show.

- 1st Wingamin
- 2nd Duenclyn

LAMB PRODUCTION CLASS

- 2 Rams under 1½ years, shorn.

- 1st Bundara Downs
- 2nd Bundara Downs
- 3rd Waratah

NOVICE CLASS: EWE, under 1½ years, shorn

- 1st Windy Hill
- 2nd Omad

EWE, over 1½ years, shorn, in lamb or in milk.

- 1st Belladonna
- 2nd Belladonna
- 3rd Duenclyn

EWE, under 1½ years,
shorn, born on or between April 1st & May 31st.

- 1st Waratah
- 2nd Duenclyn
- 3rd Wingamin

EWE, under 1½ years, shorn,
born on or between June 1st & July 31st.

- 1st Somerset
- 2nd Duenclyn
- 3rd Wattle Park

EWE, under 1½ years, shorn,
born on or after August 1st.

- 1st Glenarbian
- 2nd Somerset
- 3rd Wattle Park

PAIR OF EWES, under 1½ years, shorn.

- 1st Glenarbian
- 2nd Wingamin
- 3rd Wattle Park

EWE LAMB, born since 1st April, year of the Show.

- 1st Wingamin
- 2nd Belladonna
- 3rd Belladonna

highlights

**Champion Ewe
SOMERSET**

**Reserve Champion Ewe
DUENCLIN**

PROGENY GROUP, 3 sheep under 1½ years

- 1st Somerset
- 2nd Gemini
- 3rd Waratah

GROUP, 1 Ram, 2 ewes,
any age, from existing classes

- 1st Glenarbian
- 2nd Belladonna
- 3rd Waratah

highlights

**Most Successful Exhibitor
WARATAH**



PHOTO COURTESY OF WINGAMIN STUD



9th World Sheep & Wool Congress


The 9th World Sheep and Wool Congress will take place in Sydney at the Rosehill Gardens Event Centre over two and a half days during April 2010 and will include Congress sessions with a trade exhibition showcasing innovative products and the latest developments in the wool, sheep meat, fashion and textile design industries.

In addition, the Congress includes exciting social events, including a Welcome and International Reception, Cocktail Reception with The Australian Wool Fashion Awards and a Dinner Harbour Cruise on picturesque Sydney Harbour, as well as tours, field trips and visits to the Sydney Royal Easter Show to watch sheep judging and other arena events. The Congress presents a forum for active discussion and debate on the future and opportunities of the sheepmeat and wool industries.


The aim of the Congress is to provide an international event where industry, corporate bodies and other interested parties can unite to learn more about the sheep and wool industries worldwide, to network amongst members and meet the key people from corporate bodies which strongly support the sheep and wool industry through sponsorship of the Congress.



www.worldsheepandwoolcongress.com



Bundara Downs 086028
Senior Champion Ram
Adelaide 2009



Winning pen of 3 WS cross
lambs on the hook
Perth Royal Show 2009

Nalvin Park

breeding for the future

he's got it !!

bundara downs 086028

bwt	wwt	pwwt	pfat	pemd	c+
0.1	11.0	16.9	-0.5	19	2075

If you're not using figures like these, you're not respecting your clients or the industry. Already lambs in the system.

086028 semen packages are 30 or 50 doses.

Enquiries:
Peter & Tiffany Nalder
Ph 0427374269
or email pt.nalder@wn.com.au

Program

Pre Congress Tours

Saturday 27 March

Pre Congress Tour 1 commences Adelaide

Wednesday 31 March

New South Wales Regional Tour commences Sydney

Friday 2 April

Pre Congress Tour 2 commences Melbourne

Tuesday 6 April

Delegates arrive in Sydney.

Evening Welcome within the Trade Exhibition.

Congress

Wednesday 7 April

Congress Day 1 – Topics to include: global food security – address by the Federal Minister for Agriculture, Forestry and Fisheries, sheepmeat as a peak food in the global food chain, affects of corporate social responsibility on sheep and wool industries, genetics and genomic technology advancements. Concurrent Trade Exhibition. Evening cocktail party including The Australian Wool Fashion Awards and entertainment at the Sydney Royal Easter Show.

Thursday 8 April

Congress Day 2 – This day is split into two concurrent sessions - Sheep for Food and Sheep for Fibre. Topics include: the push for natural, ethical and sustainable production, supply chain integrity, traceability, innovations in textiles, global markets and emerging opportunities. Concurrent Trade Exhibition. Transfers to evening Congress Dinner Cruise on Sydney Harbour.

Friday 9 April

Congress Day 3 – Topics include: ruminants, climate change and emissions trading, environmental stewardship, animal rights impacts, international presentations and announcement of host country for the 10th World Sheep & Wool Congress. Concurrent Trade Exhibition. Transfers to Merino sheep judging at Royal Easter Show.

Post Congress Tour

Saturday 10 April Post Congress Tour departs Sydney.

Crazy Facts

If you yelled for 8 years, 7 months and 6 days you would have produced enough sound energy to heat one cup of coffee.

(Hardly seems worth it.)

If you farted consistently for 6 years and 9 months, enough gas is produced to create the energy of an atomic bomb

(Now that's more like it!)

The human heart creates enough pressure when it pumps out to the body to squirt blood 30 feet.

(O.M.G.!)

A pig's orgasm lasts 30 minutes.

(In my next life, I want to be a pig.)

A cockroach will live nine days without its head before it starves to death. (Creepy.)

(I'm still not over the pig.)

Banging your head against a wall uses

150 calories an hour

(Don't try this at home, maybe at work)

The male praying mantis cannot copulate while its head is attached to its body. The female initiates sex by ripping the male's head off

(Honey, I'm home. What the...?!)

The flea can jump 350 times its body length. It's like a human jumping the length of a football field.

(30 minutes..lucky pig! Can you imagine?)

The catfish has over 27,000 taste buds.

(What could be so tasty on the bottom of a pond?)

Some lions mate over 50 times a day.

(Ok, I'm going off the 'pig' idea a bit)

Butterflies taste with their feet.

(Something I always wanted to know.)

Right-handed people live, on average, nine years longer than left-handed people.

(If you're ambidextrous, do you split the difference?)

Elephants are the only animals that cannot jump.

(Okay, so that would be a good thing)

A cat's urine glows under a black light.

(I wonder who was paid to figure that out?)

An ostrich's eye is bigger than its brain.

(I know some people like that.)

Starfish have no brains

(I know some people like that too.)

Polar bears are left-handed.

(If they switch, they'll live a lot longer)

Humans and dolphins are the only species that have sex for pleasure.

(What about that pig??)



Royal Adelaide Show 2009

JUDGES REPORT

Having judged Dubbo and Bendigo in 2008 I was looking forward to officiating at our breeds premier show exhibition and with over three hundred entries I was not dissappointed.

In the Senior ram section the Champion Ram came from the Bundara Downs Stud and was exhibited in the April class, a huge volume sheep with good structural soundness and yielding ability. The reserve was out of the pairs and was only placed third. The Glenarbian ram was a stand out in the class and after a quick ruling I was able to have him out for the championship lineup, a smooth ram with great softness and correctness.

The young rams were a step up on the senior rams. The Junior Champion which also went on to be Grand Champion Ram was exhibited by the Wingamin Stud and won the July class, was the most complete ram I found on the day. He had great breed type, correctness and with the muscling through the loin and hindquarter I was hoping to find. The Reserve Junior, exhibited by Anna Villa and out of the August class was extremely sound in everyway but lacked the volume of the champion.

In the ewe section the quality was very good, finding the type of sheep I was looking for in every class.

The Champion ewe was exhibited by the Somerset Stud and was in my opinion the stand out exhibit of the show. She had great femininity and a side on muscle profile which I commented on as being perfect. The Reserve Ewe out of the youngest class had the same characteristics as the champion just not the volume and was exhibited by the Koonawarra Stud.

I take this opportunity to congratulate all the exhibitors on what was an outstanding line up of White Suffolk Sheep and the best I had seen in 4 years of attending Adelaide Royal. We are certainly improving the muscling and yeilding ability within our breed and the structural soundness of our elite show sheep is second to no breed.

Regards, Ian Gilmore

RESULTS

Ram under 1½ years. Born in April,
Shorn -untrimmed.

- 1 S & R L & G J Funke
- 2 B A & L C Prentice
- 3 WH & P J Holmes
- 4 Windy Hill
- 5 R V Piggott & Son
- 6 S J & D J Milne

Ram under 1½ years. Born in May,
Shorn -untrimmed.

- 1 C V & D C Shillabeer
- 2 P O & J A Button
- 3 Koonawarra
- 4 WH & P J Holmes
- 5 D I & S Mitchell
- 6 Wheetelande Pty Ltd

Ram, under 1½ years. Born during the month of June, in
the year prior to the Show.

- 1 I R & B E Nitschke
- 2 Days Whiteface Pty Ltd
- 3 Gemini White Suffolk Stud
- 4 Wheetelande Pty Ltd
- 5 S J & D J Milne
- 6 Days Whiteface Pty Ltd

Pen of Two Rams. April - June drop.

- 1 S J & D J Milne
- 2 Gemini White Suffolk Stud
- 3 I R & B E Nitschke
- 4 C V & D C Shillabeer
- 5 John Jamieson
- 6 S & R L & G J Funke



Royal Adelaide Show 2009

highlights

**Senior Champion Ram
BUNDARA DOWNS**

**Reserve Senior Champion Ram
GLENARBIAN**

Ram, under 1½ years. Born during the month of July, in the year prior to the Show.

- 1 CV & D C Shillabeer
- 2 R & L Collins
- 3 Wheetelände Pty Ltd
- 4 P O & J A Button
- 5 D I & S Mitchell
- 6 Ashley Park

Ram under 1½ years. Born on or after 1 August. Shorn - untrimmed.

- 1 D S & C J Ferguson & Sons
- 2 WH & PJ Holmes
- 3 Anden White Suffolk
- 4 Wheetelände Pty Ltd
- 5 R V Piggott & Son
- 6 Days Whiteface Pty Ltd

Pen of Two Rams. July - September drop.

- 1 D I & S Mitchell
- 2 CV & D C Shillabeer
- 3 R & L Collins
- 4 Anden White Suffolk
- 5 Days Whiteface Pty Ltd

Ram Lamb.

- 1 R V Piggott & Son
- 2 CV & D C Shillabeer
- 3 P O & J A Button
- 4 Koonawarra
- 5 R V Piggott & Son
- 6 John Jamieson

highlights

**Junior Champion Ram
WINGAMIN**

**Reserve Junior Champion Ram
ANNA VILLA**

**Grand Champion Ram
WINGAMIN**

Lamb Production Class.

- 1 Gemini White Suffolk Stud
- 2 Anden White Suffolk
- 3 R B & R J & T M & J I Fischer
- 4 Days Whiteface Pty Ltd
- 5 S & R L & G J Funke
- 6 I R & B E Nitschke

Ram Lamb Performance Class.

- 1 CV & D C Shillabeer
- 2 CV & D C Shillabeer
- 3 S & R L & G J Funke
- 4 R V Piggott & Son
- 5 S & R L & G J Funke

Ewe over 1½ years with lamb at foot.

- 1 Windy Hill
- 2 G D & G B Huxtable & Sons
- 3 R V Piggott & Son

Ewe under 1½ years. Born between 1 Apr & 31 May.

- 1 CV & D C Shillabeer
- 2 WH & PJ Holmes
- 3 Windy Hill
- 4 R V Piggott & Son
- 5 Wheetelände Pty Ltd
- 6 Koonawarra



Royal Adelaide Show 2009

Ewe under 1½ years. Born between 1 June & 31 July.

- 1 Somerset
- 2 D I & S Mitchell
- 3 John Jamieson
- 4 R & L Collins
- 5 I R & B E Nitschke
- 6 P O & J A Button

Ewe, under 1½ years. Born after 1 August,

- 1 Koonawarra
- 2 R & L Collins
- 3 I R & B E Nitschke
- 4 WH & PJ Holmes
- 5 John Jamieson

Pen of Two Ewes under 1½ years.

- 1 I R & B E Nitschke
- 2 D I & S Mitchell
- 3 John Jamieson
- 4 R V Piggott & Son

Ewe Lamb

- 1 CV & D C Shillabeer
- 2 R V Piggott & Son
- 3 CV & D C Shillabeer
- 4 P O & J A Button

Ewe Lamb Performance Class.

- 1 CV & D C Shillabeer
- 2 CV & D C Shillabeer
- 3 R V Piggott & Son
- 4 R V Piggott & Son

Breeders' Group

- 1 CV & D C Shillabeer
- 2 I R & B E Nitschke
- 3 D I & S Mitchell
- 4 WH & PJ Holmes
- 5 Koonawarra

Sire's Progeny Group.

- 1 I R & B E Nitschke
- 2 WH & PJ Holmes
- 3 Days Whiteface Pty Ltd
- 4 P O & J A Button
- 5 D I & S Mitchell

highlights

**Most Successful Exhibitor
WINGAMIN**

highlights

**Champion Ewe
SOMERSET**

**Reserve Champion Ewe
KOONAWARRA**



JUNIOR CHAMPION RAM, GRAND CHAMPION RAM
AND RESERVE SUPREME SHORTWOOL RAM
WON BY WINGAMIN STUD



Royal Melbourne Show 2009

highlights

**Champion Ram
KURRALEA**

**Reserve Champion Ram
DAYS WHITEFACE**

RAM over 1 1/2 years, shorn, untrimmed.

1st Yanco Agricultural High School:

RAM under 1 1/2 years shorn untrimmed
born between 1st April and 31st May,

1st B A & L C Prentice:

2nd Days Whiteface:

3rd B A & L C Prentice:

RAM under 1 1/2 years shorn untrimmed
born between 1st June and 31st July

1st Days Whiteface:

2nd R & L Collins:

3rd G D & G B Huxtable:

RAM under 1 1/2 years shorn untrimmed
born after 1st August.

1st Days Whiteface:

2nd R & L Collins:

3rd Yanco Agricultural High School:

PEN OF 2 RAMS under 1 1/2 years shorn
untrimmed born between 1st April and 30th June

1st B A & L C Prentice:

2nd G D & G B Huxtable:

PEN OF 2 RAMS under 1 1/2 shorn
untrimmed born between 1st July or after,

1st St Paul's College:

RAM LAMB dropped after 1st April year of Show
(Dams not to be exhibited).

1st Yanco Agricultural High School:

LAMB PRODUCTION CLASS,
TWO RAMS UNDER 1 1/2, SHORN.

1st B A & L C Prentice:

2nd Days Whiteface:

3rd St Paul's College:

EWE, over 1 1/2 years, shorn,
untrimmed, with lamb at foot.

1st G D & G B Huxtable:

EWE under 1 1/2 years shorn untrimmed
born between 1st April and 31st May

1st G D & G B Huxtable:

EWE under 1 1/2 years shorn untrimmed
born after 1st June and before 31st July

1st G D & G B Huxtable:

2nd R & L Collins:

3rd Deppeler Suffolks:

EWE under 1 1/2 years shorn untrimmed
born after 1st August.

1st R & L Collins:

2nd R & L Collins:

PEN OF TWO EWES under 1 1/2
shorn untrimmed.

1st St Paul's College:

EWE LAMB, dropped after 1st April of year of Show.

1st G D & G B Huxtable:

highlights

**Champion Ewe
DUENCLIN**

**Reserve Champion Ewe
MERRIBROOK**



BREEDERS GROUP OF 1st RAM AND 2 EWES
under 1 1/2 years, animals to be drawn from
Ordinary classes and to be bred by Exhibitor.

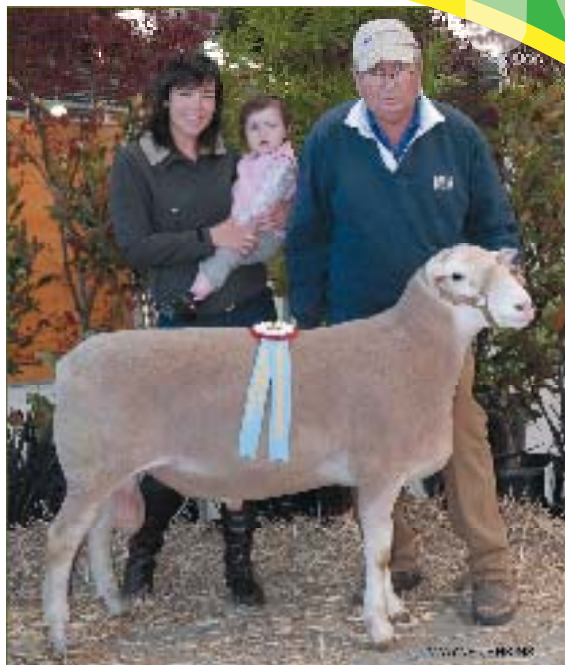
- 1st R & L Collins:
- 2nd G D & G B Huxtable:
- 3rd St Paul's College:

SIRE'S PROGENY GROUP, to consist of 3 sheep,
under 1 1/2 years,
to be sired by one nominated sire.

- 1st R & L Collins:
- 2nd R & L Collins:

SIRE'S PROGENY GROUP - To consist of 4 sheep,
under 2 1/2 years, including lambs of any
sex and any wool length.

- 1st R & L Collins:



CHAMPION RAM
WON BY KURRALEA STUD



RESERVE CHAMPION RAM
WON BY DAYS WHITEFACE STUD

highlights

**Most Successful Exhibitor
MERRIBROOK**





Royal Perth Show 2009

White Suffolk Ram Under 1 1/2 Years,

- 1st- Nalvin Park Peter Nalder
- 2nd- Nalvin Park Peter Nalder
- 3rd- Valencia Downs G J & J Smith

White Suffolk Ram. Under 1 1/2 Years.

- 1st- Nalvin Park Peter Nalder
- 2nd- Iveston Stud G R & D J Bingham
- 3rd- Brimfield Poll Dorset Stud Max Whyte

White Suffolk Ram. Under 1 1/2 Years

- 1st- Iveston Stud G R & D J Bingham
- 2nd- Wesswood Stud M Klante
- 3rd- Wesswood Stud M Klante
- 4th- Nalvin Park Peter Nalder

White Suffolk Ram. Over 2 Years.

- 1st- Wesswood Stud M Klante
- 2nd- Brimfield Poll Dorset Stud Max Whyte
- 3rd- Codji White Suffolf Stud P Dowdell

White Suffolk Ram Lamb.

- 1st- Nalvin Park Peter Nalder
- 2nd- Wesswood Stud M Klante
- 3rd- Valencia Downs G J & J Smith
- 4th- Stockdale L J & J K Fairclough & Sons
- 5th- Wesswood Stud M Klante

White Suffolk Ram Lamb.

- 1st- Nalvin Park Peter Nalder
- 2nd- Jocklor L J & L Page
- 3rd- Blackbutt Grazing M & S Rundell
- 4th- Blackbutt Grazing M & S Rundell
- 5th- Nalvin Park Peter Nalder

White Suffolk Pair Of Rams. Under 1 1/2 Years,

- 1st- Wesswood Stud M Klante
- 2nd- Jocklor L J & L Page
- 3rd- Iveston Stud G R & D J Bingham

highlights

Champion Ram

IVESTON

Reserve Champion Ram

WESSWOOD

White Suffolk Ewe. Under 1 1/2 Years,

- 1st- Nalvin Park Peter Nalder
- 2nd- Hedingham W D & B M Thompson & Sons
- 3rd- Wesswood Stud M Klante
- 4th- Stockdale L J & J K Fairclough & Sons
- 5th- Jocklor L J & L Page

White Suffolk Ewe. Under 1 1/2 Years,

- 1st- Blackbutt Grazing M & S Rundell
- 2nd- Wesswood Stud M Klante
- 3rd- Nalvin Park Peter Nalder
- 4th- Blackbutt Grazing M & S Rundell
- 5th- Valencia Downs G J & J Smith

White Suffolk Ewe. Over 2 Years,

- 1st- Wesswood Stud M Klante
- 2nd- Brimfield Poll Dorset Stud Max Whyte
- 3rd- Codji White Suffolf Stud P Dowdell

White Suffolk Ewe Lamb. Born Before 30 May

- 1st- Wesswood Stud M Klante
- 2nd- Nalvin Park Peter Nalder
- 3rd- Wesswood Stud M Klante

White Suffolk Ewe Lamb. Born After 1 June

- 1st- Jocklor L J & L Page
- 2nd- Brimfield Poll Dorset Stud Max Whyte
- 3rd- Wesswood Stud M Klante
- 4th- Nalvin Park Peter Nalder

highlights

Champion Lamb

WESSWOOD



Royal Perth Show 2009



RESERVE CHAMPION RAM
"WESSWOOD" STUD WITH
JUDGE DALE MOORE,



SUPREME CHAMPION WHITE SUFFOLK
HELD BY MALCOLM KLANTE "WESSWOOD"
STUD & JUDGE DALE MOORE ON LEFT



FROM LEFT: RESERVE CHAMPION RAM
"WESSWOOD" STUD, JUDGE DALE MOORE,
CHAMPION RAM "IVESTON" STUD

White Suffolk Pair Of Ewes. Under 1 1/2 Years,
1st- Wesswood Stud M Klante
2nd- Blackbutt Grazing M & S Rundell
3rd- Jocklor L J & L Page

highlights

**Champion Ewe.
WESSWOOD**

**Reserve Champion Ewe
BLACKBUTT**

**Supreme Champion
WESSWOOD**



FROM LEFT: CHAMPION LAMB "WESSWOOD" STUD, RESERVE
CHAMPION EWES "BLACKBUTT" STUD, JUDGE DALE MOORE
AND CHAMPION EWES "WESSWOOD" STUD

White Suffolk Group Class - Ram And Two Ewes.
1st- Wesswood Stud M Klante
2nd- Nalvin Park Peter Nalder
3rd- Jocklor L J & L Page

White Suffolk Group Of Any Three Rams. U 1 1/2 yrs,
1st- Wesswood Stud M Klante
2nd- Nalvin Park Peter Nalder
3rd- Iveston Stud G R & D J Bingham



**INTERBREED GROUP
WON BY WESSWOOD STUD**

About Precision Sheep Management

Courtesy Sheep CRC website: www.sheepcrc.org.au

WHAT IS PRECISION SHEEP PRODUCTION?

Precision Sheep Management (PSM) is based on the concept of measuring and identifying animals on merit to lift flock productivity. The key to precision sheep management applications is individual identification and the use of accurate weighing, recording and drafting systems. An option to collect accurate data on individual animals is through the practical application of radio frequency identification (RFID).

It is a more integrated production system based on measurement, management and marketing of animals according to their individual merit. Selection on merit allows management according to potential, and selling based on market specifications.

The application of more intensive management and making use of this information in selection and management is the first step in a precision production system, or PSM.

BENEFITS - COMMERCIAL AND STUD

The sheep industry has an enormous opportunity for productivity gain because of the measurable variation within a flock. While large differences exist between the top 25 percent and bottom 25 percent of animals in fleece weight, fibre diameter, growth rate and reproduction, the differences in dollar value can be extreme - three to five times between the upper and lower quartiles.

PSM uses selection, management and marketing strategies to increase the value of the top 25 percent of the flock and minimise the costs of the bottom 25 percent. These new management approaches will only be realised if animals are measured for their potential level of production.

Understanding the variability that exists within a flock provides a platform from which to select the most productive sheep.

1. Stud selection.

The variation indicates the massive scope for selection and genetic improvement within studs. This potential exists because most of the production traits are not only variable but highly heritable and relatively cheap to measure. So, a specialised ram breeding sector operating efficiently delivering genetic gain will continue to be an important element for the industry.

2. Commercial flock selection.

The same variability is important within commercial flocks because we can further increase productivity by using selection within the commercial flock and the

benefits complement those provided through stud rams. The same features of variation, high heritability and low cost of measurement - make precision production attractive.

3. Management.

In addition to the scope for selection, the variation within a flock offers an important opportunity to identify segments of the flock for specific management and marketing purposes. The aim is to devise strategies that will increase the value of the most valuable 25% of animals and minimise costs of the least valuable 25% of the flock. This is a very different approach to minimising the costs of managing the whole flock.

New measurement tools are emerging to complement traditional tools. Automated data capture to more effectively collect information not previously possible has delivered new capabilities.

Practical application of radio frequency identification (RFID) as a means of recognising individual animals has improved the efficiency and accuracy of data capture, and improved the use and re-use of information for selection and management.

More importantly, this research has identified new possibilities for animal-activated data capture. Walk-over weighing (WOW), where an animal's identity and weight are captured remotely without the need for mustering and labour-intensive weighing have been developed.

Cost comparison of using Visual and RFID tags for collecting sheep weights and data cleaning

	Operation 1 (collecting weights only)		Operation 2 (collecting weights & data cleaning)	
	Visual tags	RFID	Visual tags	RFID
No of sheep	700	700	600	600
No of labour units	3	2	3	2*
No of man hours	11.67	4.67	13.5	3
Cost @ \$40 per hour	\$466.80	\$186.80	\$540	\$120
Cost per weight recorded	\$0.67	\$0.27	\$0.90	\$0.20
Estimated error rate			5%	.05% ^
No of corrections needed			30	.3
Time/error			.1	.1
Hourly rate for data management			\$80	\$80
Cost of time for tag correction			\$240	\$2.40
Cost per unit correct data			\$1.30	\$0.20

* Labour is required for pushing-up, tag reading and scale operation. The use of RFID allows tag reading and scale operation to be combined.

^ Errors in RFID are limited to duplicate records of the same sheep. These are easily dealt with by deleting duplicate records.

Note: Cost savings need to be offset against entry level hardware costs of approximately \$5000 or 125 hours labour at \$40/hr and tag costs (tags can be reused).



About Precision Sheep Management

Pedigree Matchmaker uses the physical association between (tagged) ewes and their lambs and provides an opportunity to record lamb survival and assign maternal pedigree without undertaking costly mothering-up procedures.

MAKING THE MOST OF PEDIGREE

The majority of Merino breeding flocks have partial (sire only) or no record of pedigree. This is due in part to the labour intensive nature of collecting maternal pedigree (mothering-up) and the management of large numbers of individual records. Pedigree Matchmaker offers an effective alternative method of collecting dam pedigree and when added to sire pedigree, adds substantially to the value of the information.

HAVING ACCESS TO DAM PEDIGREE WILL:

- improve the reliability of the information used to predict breeding values;
- allow accurate genetic comparison between animals over time; and
- provide genetic links between flocks so across-flock evaluation is possible.

Research undertaken on QPLU\$ lines at Trangie, NSW, demonstrates:

- for males, including pedigree, improves selection accuracy by 11% - 16% when used with two-stage shearing records.
- for females, including pedigree, leads to a 19% - 21% improvement in selection accuracy.

COST COMPARISON:

- Pedigree Matchmaker: Cost - \$3 - \$4 per lamb.
- Mothering up: The additional labour required to catch and tag each lamb at birth: Cost - \$10 - \$12 per lamb.
- DNA analysis: The cost of DNA testing the progeny at a later date: Cost - \$30+ per lamb.

IDENTIFY ANIMALS THAT MAKE MOST MONEY

Sheepmeat and wool producers have an enormous opportunity to achieve major gains in productivity and profitability because of the measurable variation within each and every flock

The large differences that exist between the best and worst performing animals in fleece weight, fibre diameter, growth rate and reproduction can mean significant differences in dollar value.

Precision sheep management enables the capture and use of individual animal records in selection, management and marketing strategies to identify the top 25 percent of the flock and minimise the costs of the bottom 25 percent thus increasing overall farm profitability.

FINANCIAL ADVANTAGE

Accurate data is essential when making breeding and selection decisions. Electronic data capture can reduce errors to near zero. Some flocks have realised or unrealised errors well in excess of 5%. Electronic tag reading can deliver in excess of 50% savings in labour input costs and an even larger reduction in the cost of data cleaning.

IMPLEMENTING A PRECISION SHEEP MANAGEMENT SYSTEM

Implementing PSM is relatively straight forward. Capital investment and significant practice change is required for most producers. It is essential to know which sheep in the flock contribute to enterprise profit. This involves measurement of the basic characteristics that determine value such as fleece-weight, fibre diameter and body weight. These parameters are easy and cheap to measure.

- Radio Frequency Identification (RFID) make collection of data easier, less labour intensive and more accurate.
- RFID tags also allow easy re-use of data throughout the life of the animal and facilitate automatic drafting and more sophisticated management techniques.
- Automated data entry, data management and decision support systems are available for practically all aspects of PSM and are becoming more powerful and easier to use.
- Automatic drafting using RFID with decisions based on an index, or a single parameter, allows precise management of culling, joining and marketing. Automatic drafting systems responding to computer lists or real time weights, are becoming robust, cost effective management tools.



Advanced features of PSM include continuous or regular weight monitoring and remote drafting systems that respond to weight change and/or indexed instructions. These systems used together hold potential for precise administration of nutrition to animals in need, early detection of parasite and health problems, management of wool quality and lamb survival.



FOR MORE INFORMATION CHECK OUT THE WEBSITE:

where you can download booklets, brochures and guides to PSM:

- Precision Sheep Management - Introduction (527.37 KB)
- Precision Sheep Management - Weighing, Recording and Drafting (527.89 KB)
- Precision Sheep Management - Reproductive Performance (1.7 MB)
- Precision Sheep Management: Glovebox Guide (1.79 MB)
- Precision Pays Booklet (3.06 MB)
- Pedigree MatchMaker Brochure (1.73 MB)
- E-Stud: Reaching new heights brochure (1.66 MB)

PRECISION SHEEP PRODUCTION MASTERCLASS

The Precision Sheep Management Masterclass is designed to train service providers and producers in the area of Precision Management, the role of individual animal management and how to apply hardware and software to data collection and management scenarios. The Masterclass combines theory with a significant amount of hands on learning.

- Next Masterclass 17/18 November 2009
Orange NSW
- watch out for others being held next year





Sheep Meat Council of Australia

OUR ROLE

The Sheepmeat Council of Australia (SCA) was formed in 1978 and is the peak national body that represents and promotes the interests of lamb and sheepmeat producers in Australia. Our core business is policy development and lobbying.

Sheepmeat Council is recognised as the prescribed industry body by the Australian Meat and Livestock Industry Act 1997.

Sheepmeat Council's key role is scrutinising the performance of and settling the strategic imperatives to be pursued by levy funded bodies, in particular, Meat & Livestock Australia (MLA), Animal Health Australia and the National Residue Survey.

Sheepmeat Council provides policy advice to the Federal Minister for Agriculture and makes recommendations to the Minister on the rate of levy to apply.

Sheepmeat Council of Australia is funded by voluntary membership subscriptions paid by State Farm Organisations and through the industry activities it performs for all sheep and lamb levy payers on behalf of the Red Meat Advisory Council (RMAC).



OUR CORE BUSINESS

- Advocates and pursues the policy and political interests of the nation's sheepmeat producers
- Promotes the professionalism of the sheepmeat industry in Australia and globally
- Influences key state, national and international stakeholders and forums, including Governments, to preserve and grow the position of Australia's sheepmeat producers
- Scrutinises the performance and sets the strategic imperatives to be pursued by levy funded bodies, such as Meat & Livestock Australia, Animal Health Australia and the National Residue Survey
- Brokers industry and government programs and funding arrangements
- Represents and promotes the views of Australian sheepmeat producers in the national media

To find out more, check out their website <http://www.sheepmeatcouncil.com.au>

We oversee your levy....

As a sheepmeat producer, you pay levies that are utilised by Meat and Livestock Australia (MLA) Animal Health Australia (AHA) and the National Residue Survey (NRS).

The current levy allocation is delivering substantial benefits to the sheepmeat industry. A recent independent assessment found that over the last 20 years, work by MLA and its predecessors has had a significant impact on the lamb industry, contributing to increased turn-off of larger leaner carcasses, increased consumer demand, higher returns, and an

additional \$2.4 billion in industry value add.

Despite the national flock declining from its 180 million high to around 70 million today, Australia is producing a record tonnage of lamb highlighting the strength of the industry as a stand alone from wool; a tribute to all sheepmeat producers.

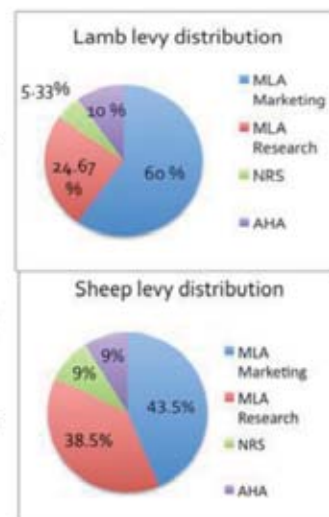
SCA closely monitors the performance of the levy-funded organisations as we are responsible for making recommendations to the Minister for Agriculture on the distribution of the lamb and sheep

transaction levy income.

Currently, the legislation stipulates that lamb producers are levied at 2% of the sale value up to a maximum of \$1.50 a head, while sheep transactions are levied at 2% up to a maximum of 20 cents a head.

SCA works with its state farming organisation members on the allocation and performance of the levy expenditure on a regular basis.

To learn further about the distribution of the levy visit our website.



Subscribe to SCA e-newsletter!
sheepmeatcouncil.com.au



www.farmbiosecurity.com.au

FARM BIOSECURITY

Farm biosecurity is designed to help secure your property against pests and diseases. Sheepmeat Council has been actively involved in the development of the Farm Biosecurity program, facilitated by AHA

Simple principles and practices will help you protect your livestock from the pests and diseases that are more common to Australian livestock and help to prevent an emergency animal disease outbreak.

In the case of an emergency animal disease outbreak, following Farm Biosecurity principles will allow early diagnosis, restrict spread, speed eradication and help protect livestock on-farm and the livestock industry.

<http://www.farmbiosecurity.com.au/>

Visit the Farm Biosecurity website to learn about simple measures and tools that livestock producers can implement as part of their day to day operations.

Keep up to date...

Subscribe to the Sheep Meat Council eNewsletter to keep informed about Latest Policy and Issues affecting our industry such as:

- animal welfare issues
 - climate change policy - how will it effect us
 - meat industry strategic plan
 - maintaining the national flock
-

Perspective

One day, the father of a very wealthy family took his son on a trip to the country with the express purpose of showing him how poor people live. They spent a couple of days and nights on the farm of what would be considered a very poor family.

On their return from their trip, the father asked his son, 'How was the trip?'

'It was great, Dad.'

'Did you see how poor people live?' the father asked.

'Oh yeah,' said the son.

'So, tell me, what did you learn from the trip?' asked the father

The son answered: 'I saw that we have one dog and they had four.

We have a pool that reaches to the middle of our garden and they have a creek that has no end.

We have imported lanterns in our garden and they have the stars at night.

Our patio reaches to the front yard and they have the whole horizon.

We have a small piece of land to live on and they have fields that go beyond our sight.

We have servants who serve us, but they serve others.

We buy our food, but they grow theirs.

We have walls around our property to protect us; they have friends to protect them.'

The boy's father was speechless.

Then his son added, 'Thanks Dad for showing me how poor we are.'

Isn't perspective a wonderful thing?



Understanding Gestation Length ASBVs

Gestation length (GL) is defined as the period from the date of conception (i.e. when the ewe gets in lamb) to when the ewe subsequently lambs. Shorter GL is generally associated with lighter birth weight and improved lambing ease.

INTERPRETING GESTATION LENGTH ASBVS

GL ASBVs provide an estimate of genetic differences between animals in gestation length. GL ASBVs are expressed in days. Moderately low or more negative GL ASBVs are considered to be more favourable. However, extreme GL ASBVs at either end of the scale should be avoided as they can have a detrimental effect on lamb survival.

For example, a ram with a GL ASBV of -2 days is genetically determined to have a gestation length that is 4 days shorter than a ram with a GL ASBV of +2 days. As half of an animal's genes are passed on to its progeny, half of this difference is passed on. Therefore, lambs sired by the first ram will, on average, be born 2 days earlier than lambs sired by the second ram.

RECORDING INFORMATION FOR GESTATION LENGTH

GL ASBVs are calculated from both the joining date and date of birth records for lambs conceived by either AI or Hand Mating. Consequently, the information that needs to be recorded for the calculation of GL ASBVs includes:

- the date of any AI or Hand Mating joinings
- the date of birth details for each lamb

When recording gestation length, it is also important to note that:

- Gestation length information is currently not used in the SHEEP GENETICS analysis if
 - (a) the lamb is by embryo transfer, or
 - (b) only one animal is represented in a contemporary group.
- No information from natural matings is used in the calculation of GL ASBVs. Although some natural matings may be observed, they are not currently used in the calculation of gestation length as there is no guarantee that the observed mating is the one that successfully results in the conception of the lamb/s.

For more information regarding Gestation Length ASBVs, please contact the staff at Sheep Genetics Australia.



Understanding Lambing Ease ASBVs



Lambing ease has an obvious impact on the profitability of a flock. As lambing ease decreases, ewe and lamb mortality increases as does additional labour requirement and veterinary expense. Whilst many large studies have consistently shown birth weight to be the most important genetic factor influencing lambing ease, there are also other aspects that need to be considered. For example, lamb shape, pelvic area and lambing "will".

LAMBPLAN Lambing Ease (LE) ASBVs are calculated using lambing ease scores recorded at birth and combine all of the factors affecting lambing ease.

WHAT LAMBING EASE ASBVS ARE AVAILABLE?

LAMBPLAN produces two LE ASBVs :

(I) LAMBING EASE DIRECT

LE DIR ASBVs are estimates of genetic differences in the ability of a sire's lambs to be born unassisted. The ASBVs are reported as differences in the percentage of unassisted lambings. Higher, more positive, LE DIR ASBVs are more favourable. For example, a ram with an ASBV of +5.0% would be expected, on average, to produce 3% fewer difficult lambings than a ram with an ASBV of -1.0% (6% difference between the sires, then halved as they only contribute half the genetics).

(II) LAMBING EASE DAUGHTERS

LE DTR ASBVs are estimates of genetic differences in the ability of a sire's daughters to lamb without assistance. The ASBVs are also reported as differences in the percentage of unassisted lambings.

Higher, more positive, LE DTR ASBVs are more favourable. For example, a ram with an ASBV of +4.0% would be expected to on average produce daughters that have 3% less lambing problems than the daughters of a ram with an ASBV of -2.0%.

The challenge when selecting animals is to identify animals that have both positive ASBVs for LE DIR & LE DTR.

WHICH LAMBING EASE ASBV SHOULD YOU USE?

When using LE ASBVs to select rams it is important to consider the production system that these rams are to be used in. In a cross-breeding program where rams are being used as terminal sires and all progeny are being slaughtered, the LE DIR ASBV is the appropriate trait to use.

Where rams are being used to breed replacement ewes, it is important to include both LE DIR and LE DTR in the selection process. As the LE DIR ASBV describes how easily his lambs will born and the LE DTR ASBV describes how easily his daughters will have lambs.

RECORDING INFORMATION FOR LAMBING EASE

Lambing Ease ASBVs are calculated from three main sources of information – lambing ease score, birth weight and gestation length data. By far the most important of these sources is lambing ease score.

Lambing ease scores should be measured at birth by visually scoring females on the following scale of 1 - 5.

SCORE CODE DESCRIPTION

1. Unassisted – Ewe lambled unassisted / No difficulty
2. Easy Pull – Slight intervention is required at birth
3. Hard Pull – Significant human intervention was required to assist birth
4. Malpresentation
5. Veterinary assistance

* Note that a blank score or a score of [0] will be interpreted as "unobserved", indicating that lambing ease was not scored



When recording lambing ease scores, it is important to consider the following:

- If you regularly check your ewes (e.g. on a daily basis), it is reasonable to assume that a ewe who lambs without assistance between visits can be considered as unassisted (no difficulty) even though you did not see her lamb.
- Record a score for all lambs rather than just difficult or easy births. Scores should be recorded for dead lambs, if possible.
- If lambing difficulty score is either blank or [0], it is interpreted as no score recorded rather than "no difficulty".
- There needs to be some level of lambing difficulty in the flock for the scores to be used effectively by the LAMBPLAN analysis. That is, simply scoring all births in a flock with a lambing difficulty score of [1] will not identify any genetic differences in ease of lambing.
- A birth management group should be recorded if there are different treatments of the females prior to lambing that may affect lambing ease. For example, where one group of ewes have had different feed availability.
- When calculating the LE ASBVs, lambing ease scores of [4] and [5] are excluded from the LAMBPLAN analysis as these problems are considered non-genetic in origin.

Lambing ease information is currently not used in the Sheep Genetics analysis if;

- (a) There are insufficient lambing ease records from that flock. This is evaluated on a flock and drop basis.
- (b) Only one animal is represented in a contemporary group.
- (c) There is no variation in lambing ease scores within a group.

In addition to lambing ease scores, birth weight and gestation length information is also included in the calculation of LE ASBVs. Breeders wishing to optimise the accuracy of their LE ASBVs should also consider collecting this information and submitting it to LAMBPLAN.

For more information regarding LE ASBVs, please contact the staff at Sheep Genetics.



PHOTO COURTESY JULIE KLANTE, WESSWOOD STUD



2009 Sale Results

ROYAL ADELAIDE ELITE RAM SALE

Andrew Donnan - Anden, VIC	Offered: 2	Sold: 2	Top Price: \$13,000	Average: \$10,000
DS & CJ Ferguson & Sons - Anna Villa, SA	Offered: 3	Sold: 3	Top Price: \$6,500	Average: \$3,833
RB & RJ & TM & JI Fischer - Ashmore, SA	Offered: 2	Sold: 2	Top Price: \$5,000	Average: \$5,000
A & D Krieg - Aylesbury Farm, SA	Offered: 2	Sold: 0	Top Price: -	Average: -
S, RL & GJ Funke - Bundara Downs, SA	Offered: 2	Sold: 2	Top Price: \$21,000	Average: \$12,500
IG & JO Pfeiffer - Burwood, SA	Offered: 2	Sold: 1	Top Price: \$2,000	Average: \$1,000
Days Whiteface P/L - Days, SA	Offered: 2	Sold: 2	Top Price: \$7,000	Average: \$6,000
IR & BE Nitchshke - Glenarbian, SA	Offered: 2	Sold: 2	Top Price: \$7,000	Average: \$6,750
HJ & MA Whittlesea - Hayelle, VIC	Offered: 2	Sold: 1	Top Price: \$2,000	Average: \$1,000
RV Piggot & Son - Illoura, SA	Offered: 2	Sold: 1	Top Price: \$26,000	Average: \$13,000
Grossman Family - Koonawarra, SA	Offered: 2	Sold: 2	Top Price: \$4,500	Average: \$4,500
BA & LC Prentice - Kurralea, NSW	Offered: 2	Sold: 1	Top Price: \$4,000	Average: \$2,000
AM & RA Michael - Leahcim, SA	Offered: 2	Sold: 1	Top Price: \$2,000	Average: \$1,000
R & L Collins - Merribrook, VIC	Offered: 2	Sold: 1	Top Price: \$5,000	Average: \$2,500
K & D Moore - Penrise, TAS	Offered: 2	Sold: 2	Top Price: \$2,000	Average: \$2,000
PO & JA Button - Ramsay Park, SA	Offered: 2	Sold: 2	Top Price: \$2,000	Average: \$2,000
D, I & S Mitchell - Rene, NSW	Offered: 2	Sold: 1	Top Price: \$4,000	Average: \$2,000
LH & KL McCrae - Somerset, VIC	Offered: 1	Sold: 1	Top Price: \$3,000	Average: \$3,000
AV & AJ Clarke - Topping, SA	Offered: 1	Sold: 0	Top Price: -	Average: -
SJ & DJ Milne - Waratah, VIC	Offered: 2	Sold: 2	Top Price: \$5,500	Average: \$3,750

continued over...



2009 Sale Results

ROYAL ADELAIDE ELITE RAM SALE CONTINUED

Wheetelnde Pty Ltd - Wheetelnde, SA

Offered: 2 | Sold: 2 | Top Price: \$7,500 | Average: \$5,250

CV & DC Shillabeer - Wingamin, SA

Offered: 2 | Sold: 2 | Top Price: \$10,000 | Average: \$7,000

WH & PJ Holmes - Woodbridge, SA

Offered: 2 | Sold: 2 | Top Price: \$6,000 | Average: \$5,000

SA FOUNDATION BREEDER'S SALE

ANNA VILLA

Stud Rams | Offered: 5 | Sold: 3 | Top Price: \$2000 | Average: \$2000

Stud Ewes | Offered: 24 | Sold: 23 | Top Price: \$725 | Average: \$314

ASHMORE

Stud Rams | Offered: 2 | Sold: 0 | Top Price: \$0 | Average: \$0

Stud Ewes | Offered: 14 | Sold: 11 | Top Price: \$475 | Average: \$307

AYLESBURY FARM

Stud Rams | Offered: 4 | Sold: 1 | Top Price: \$2000 | Average: \$2000

Stud Ewes | Offered: 22 | Sold: 16 | Top Price: \$425 | Average: \$261

GYPSUM HILL

Stud Rams | Offered: 0 | Sold: 0 | Top Price: 0 | Average: 0

Stud Ewes | Offered: 8 | Sold: 5 | Top Price: \$350 | Average: \$260

ILLOURA

Stud Rams | Offered: 4 | Sold: 4 | Top Price: \$3250 | Average: \$2438

Stud Ewes | Offered: 20 | Sold: 18 | Top Price: \$650 | Average: \$308

WINGAMIN

Stud Rams | Offered: 4 | Sold: 4 | Top Price: \$4000 | Average: \$2521

Stud Ewes | Offered: 18 | Sold: 14 | Top Price: \$300 | Average: \$284

DINNINUP RAM SALE

R White - Blackwood, Boyup Brook, WA

FLOCK RAMS: Offered: 14 | Sold: 13 | Top: \$2,000 | Average: \$892

DH & JE Goerling - Highbury Hills, Boyup Brook, WA

FLOCK RAMS: Offered: 14 | Sold: 14 | Top: \$1,050 | Average: \$875

PR & SJ Samwell - Ironstone Ridge, Boyup Brook, WA

FLOCK RAMS: Offered: 6 | Sold: 6 | Top: \$1,000 | Average: \$825

W White - Jackpot, Boyup Brook, WA

FLOCK RAMS: Offered: 14 | Sold: 14 | Top: \$850 | Average: \$714

continued over...



2009 Sale Results

GULGONG MEAT BREEDS INVITATION SALE

S&E Woodley - Kurraview, Dubbo, NSW

FLOCK RAMS:	Offered: 11	Sold: 11	Top: \$825	Average: \$697
-------------	-------------	----------	------------	----------------

NARROGIN PRIME LAMB SIRE SALE

P & H Dowdell - Codji, Narrogin, WA

FLOCK RAMS:	Offered: 10	Sold: 7	Top: \$1,150	Average: \$786
-------------	-------------	---------	--------------	----------------

W Thompson - Hedingham, Wickopin, WA

FLOCK RAMS:	Offered: 30	Sold: 22	Top: \$850 (2)	Average: \$650
-------------	-------------	----------	----------------	----------------

LJ & L Page & Co - Jocklor, Pingelly, WA

FLOCK RAMS:	Offered: 30	Sold: 30	Top: \$1050 (2)	Average: \$740
-------------	-------------	----------	-----------------	----------------

B Nottle - Middlmoor, Narrogin, WA

FLOCK RAMS:	Offered: 30	Sold: 30	Top: \$1100 (3)	Average: \$973
-------------	-------------	----------	-----------------	----------------

NORTHAM BRITISH BREED SALE

MP & J Klante - Wesswood, Serpentine, WA

FLOCK RAMS:	Offered: 7	Sold: 7	Top: \$900	Average: \$807
-------------	------------	---------	------------	----------------

G Cole - Sasimwa, York, WA

FLOCK RAMS:	Offered: 5	Sold: 5	Top: \$850	Average: \$760
-------------	------------	---------	------------	----------------

LANDMARK MT BARKER PRIME LAMB SALE

DJ & JA Elson - Yundabine, Napier, WA

FLOCK RAMS:	Offered: 12	Sold: 6	Top: \$650 (2)	Average: \$583
-------------	-------------	---------	----------------	----------------

QUAIRADING BREEDERS RAM SALE

G Cole - Sasimwa, York, WA

FLOCK RAMS:	Offered: 7	Sold: 7	Top: \$800	Average: \$677
-------------	------------	---------	------------	----------------

WAGIN BREEDERS RAM SALE

KJ Ladyman - Kantara, Dumblebung, WA

FLOCK RAMS:	Offered: 8	Sold: 8	Top: \$1,050	Average: \$838
-------------	------------	---------	--------------	----------------

PC & TL Nalder - Nalvin Park, Wagin, WA

FLOCK RAMS:	Offered: 20	Sold: 20	Top: \$975	Average: \$803
-------------	-------------	----------	------------	----------------



2009 Sale Results

PERTH RAS RAM SALE

M Whyte - Brimfield, Kendenup, WA

STUD RAMS: Offered: 3 | Sold: 3 | Top: \$3200 | Average: \$2,233

PJ & HM Dowdell - Codji, Narrogin, WA

STUD RAMS: Offered: 2 | Sold: - | Top: 0 | Average: -

GR & DJ Bingham - Iveston, Williams, WA

STUD RAMS: Offered: 1 | Sold: 1 | Top: \$4400 | Average: \$4,400

LJ & L Page & Co - Jocklor, Pingelly, WA

STUD RAMS: Offered: 3 | Sold: 1 | Top: \$1500 | Average: \$500

PC & TL Nalder - Nalvin Park, Wagin, WA

STUD RAMS: Offered: 5 | Sold: 3 | Top: \$2500 | Average: \$2,233

GJ & J Smith - Valencia Downs, Barkers Hill, WA

STUD RAMS: Offered: 2 | Sold: - | Top: 0 | Average: -

MP & J Klante - Wesswood, Serpentine, WA

STUD RAMS: Offered: 1 | Sold: 1 | Top: \$2000 | Average: \$2,000

STUD EWES: Offered: 1 | Sold: 1 | Top: \$750 | Average: \$750

ON PROPERTY RAM SALES

PJ & DS Routley - Almondvale, Urana, NSW

FLOCK RAMS: Offered: 50 | Sold: 52 | Top: \$1,200 | Average: \$801

T & M Stone - Banksia Plains, Borden, WA

FLOCK RAMS: Offered: 46 | Sold: 46 | Top: \$950 (3) | Average: \$705

S Rundell - Blackbutt, Koorda, WA

FLOCK RAMS: Offered: 20 | Sold: 18 | Top: 0 | Average: \$694

G McCallum - Boolerview, Booleroo Centre, SA

FLOCK RAMS: Offered: 54 | Sold: 54 | Top: \$1,200 | Average: \$825

M Whyte - Brimfield, Kendenup, WA

STUD RAMS: Offered: 1 | Sold: - | Top: 0 | Average: -

FLOCK RAMS: Offered: 25 | Sold: 23 | Top: \$1000 (3) | Average: \$780

S,R&G Funke - Bundara Downs, Bordertown, SA

STUD RAMS: Offered: 6 | Sold: 6 | Top: \$5000 | Average: \$2,416

STUD EWES: Offered: 10 | Sold: 10 | Top: \$3,800 | Average: \$1,590

FLOCK RAMS: Offered: 144 | Sold: 142 | Top: \$2,000 | Average: \$848

continued over...



2009 Sale Results

ON PROPERTY RAM SALES CONTINUED

IG & JO Pfeiffer - Burwood, Bordertown, SA

STUD RAMS:	Offered: 6	Sold: 6	Top: \$3600	Average: \$1,090
FLOCK RAMS:	Offered: 106	Sold: 74	Top: \$1,900	Average: \$689

J McIntosh - Claremont, Crookwell, NSW

FLOCK RAMS:	Offered: 25	Sold: 25	Top: \$660	Average: \$550
-------------	-------------	----------	------------	----------------

GD & GB Huxtable & Sons - Duenclin, Kaniva, SA

STUD RAMS:	Offered: 6	Sold: 3	Top: \$3400	Average: \$2,133
FLOCK RAMS:	Offered: 100	Sold: 76	Top: \$950	Average: \$677

Farrer Memorial Ag High School - Farrer, Tamworth, NSW

FLOCK RAMS:	Offered: 57	Sold: 57	Top: \$1100 (2)	Average: \$711
-------------	-------------	----------	-----------------	----------------

IR & BE Nitschke - Glenarbian, Millicent, SA

FLOCK RAMS:	Offered: 110	Sold: 110	Top: \$1,200	Average: \$705
-------------	--------------	-----------	--------------	----------------

KC McCallum & Co - Gumview, Melrose, SA

FLOCK RAMS:	Offered: 55	Sold: 55	Top: \$1,400	Average: \$847
-------------	-------------	----------	--------------	----------------

HJ & MA Whittlesea - Hayelle, Serviceton, VIC

STUD RAMS:	Offered: 1	Sold: 1	Top: \$1400	Average: \$1,400
FLOCK RAMS:	Offered: 49	Sold: 49	Top: \$1,100	Average: \$721.43

Tamesha Gardner - Ida Vale, Kojonup, WA

FLOCK RAMS:	Offered: 70	Sold: 68	Top: \$1,600	Average: \$726
-------------	-------------	----------	--------------	----------------

RV Piggott & Son - Illoura, Moorlands SA

FLOCK RAMS	Offered 230	Sold: 230	Top \$1400	Average \$733
------------	-------------	-----------	------------	---------------

DJ, ME & AD McDonald - Kuloomba, Esperance, WA

FLOCK RAMS:	Offered: 53	Sold: 53	Top: \$1,550	Average: \$892
-------------	-------------	----------	--------------	----------------

S&E Woodley - Kurraview, Dubbo, NSW

STUD RAMS:	Offered: 4	Sold: 4	Top: \$000	Average: \$2,250
STUD EWES:	Offered: 22	Sold: 17	Top: \$750	Average: \$318
FLOCK RAMS:	Offered: 92	Sold: 92	Top: \$1,150	Average: \$885

Max Treweek - Lauridale, Wakool, WA

FLOCK RAMS:	Offered: 114	Sold: 114	Top: \$925	Average: \$704
-------------	--------------	-----------	------------	----------------



2009 Sale Results

ON PROPERTY RAM SALES CONTINUED

Harry Holmes - Leawarra, Willunga, SA

FLOCK RAMS: Offered: 36 | Sold: 36 | Top: \$1,050 | Average: \$745

RW & GA Buswell - Matilda Downs, Mt Barker, WA

FLOCK RAMS: Offered: 40 | Sold: 33 | Top: \$1200 (4) | Average: \$898

GC & JM Bowen - Mount Ronan, York, WA

FLOCK RAMS: Offered: 72 | Sold: 72 | Top: \$1,600 | Average: \$1274

Ashley Simons - Pembroke, Telangatuk East, VIC

FLOCK RAMS: Offered: 30 | Sold: 30 | Top: \$620 | Average: \$497.90

Mary Burzacott - Richmond Park, Robe, SA

STUD RAMS: Offered: 2 | Sold: 2 | Top: \$2,100 | Average: \$1,175

FLOCK RAMS: Offered: 148 | Sold: 148 | Top: \$1,350 | Average: \$726

L & K McCrae - Somerset, Hamilton, VIC

STUD RAMS: Offered: 1 | Sold: 1 | Top: \$2,500 | Average:

FLOCK RAMS: Offered: 20 | Sold: 20 | Top: \$1,500 | Average: \$953

LJ & JK Fairclough - Stockdale, York, WA

FLOCK RAMS: Offered: 43 | Sold: 43 | Top: \$1,000 | Average: \$810

LP & JM Richards - Tongara, Coonalpyn, SA

FLOCK RAMS: Offered: 90 | Sold: 90 | Top: \$1,100 | Average: \$780

SJ & DJ Milne - Waratah, Hamilton, VIC

STUD RAMS: Offered: 4 | Sold: 4 | Top: \$2,000 | Average: \$1,600

STUD EWES: Offered: 18 | Sold: 9 | Top: \$300 | Average: \$283

FLOCK RAMS: Offered: 36 | Sold: 36 | Top: \$1,400 | Average: \$739

IG & DA Porter - Westleigh, Beaufort, VIC

FLOCK RAMS: Offered: 71 | Sold: 68 | Top: \$920 | Average: \$610

RE & IE Neill - Wheetelande, Farrell Flat, SA

FLOCK RAMS: Offered: 100 | Sold: 100 | Top: \$3,100 | Average: \$1126

continued over....



2009 Sale Results

ON PROPERTY RAM SALES CONTINUED

CV&DC Shillabeer - Wingamin, Karoonda, SA

FLOCK RAMS:	Offered: 123	Sold: 123	Top: \$1,600	Average: \$814
-------------	--------------	-----------	--------------	----------------

L Webster - Wirraway, Greenhills, WA

STUD EWES:	Offered: 38	Sold: 30	Top: \$400	Average: \$275.00
FLOCK RAMS:	Offered: 44	Sold: 29	Top: \$900	Average: \$709

WH & PJ Holmes - Woodbridge, Tanunda, SA

FLOCK RAMS:	Offered: 30	Sold: 30	Top: \$1,350	Average: \$897.24
-------------	-------------	----------	--------------	-------------------

PG & SJ Clothier - Woolumbool, Lucindale, SA

STUD RAMS:	Offered: 10	Sold: 10	Top: \$2200	Average: \$1,590
FLOCK RAMS:	Offered: 75	Sold: 75	Top: \$1,700	Average: \$980.60

DIARY OF AN ENGLISHMAN IN AUSTRALIA

Just got transferred with work from grey old London to our new home in Australia. Now this is a town that knows how to live! Beautiful, sunny days with warm, balmy evenings. I watched the sunset from a deckchair by the pool yesterday. It was beautiful. I've finally found my new home. I love it here!!!

September 13 - It's really heating up now. It got to 31 today. No problem though. Living in an air-conditioned home, driving air-conditioned car. What a pleasure to see the sun every day like this. I'm turning into a sun-worshipper.

September 30th - Had the back yard landscaped with tropical plants today. Lots of palms and rocks. No more mowing lawns for me. Another scorcher today, but I love it here.

October 15th - Fell asleep by the pool. Got third-degree burns over 40% of my body. Missed three days of work. What a dumb thing to do! Got to respect the ol' sun in a climate like this.

October 20th - Didn't notice Kitty (our cat) sneaking into the car before I left for work this morning. By the time I got back to the car after work, Kitty had died - swollen up to the size of a shopping bag & stuck to the upholstery. The car now smells like Whiskettes & cat shit. I've learned my lesson though: no more pets in this heat.

October 25 - This wind is terrible. It feels like a giant blow dryer. And it's hot as hell! The home air conditioner is on the blink and the repair man charged \$200 just to drive over and tell me he needs to order parts from Sydney.

October 30th - The temperature's is up around 40 and the parts still haven't arrived for the aircon. Been sleeping outside by the pool for three nights now. \$800,000 house and we can't even go inside. Why did I ever come here?

November 8 If one more smart arse says 'Hot enough for you today?', I'm going to throttle him. Bloomin' heat! By the time I get to work, the car's radiator is boiling over, my clothes are soaking wet and I smell like baked cat!

November 9 - Tried to run some errands after work, wore shorts, and sat on the black leather upholstery in the ol' car. I thought my bum was on fire. I lost two layers of flesh and all the hair on the backs of my legs. Now the car smells like burnt hair, fried flesh and baked cat!

November 10 - Weather report! It might as well be a recording. Hot and sunny, Hot and sunny, Hot and sunny! It's been too hot to do anything for two months & the weatherman says it might really warm up next week. Doesn't it ever rain in this damn place? Water restrictions are on, so my \$5,000 worth of palms are drying up and blowing into the pool. The only things that thrive in this hell-hole are the bloomin' flies. Don't dare open your mouth for fear of swallowing half a dozen of the buggers!

November 20th - Welcome to HELL! It got to 45 degrees today. Now the air conditioner's gone in my car. The repair man came to fix it and said, 'Hot enough for you today?' My wife had to spend the \$2,500 mortgage payment to bail me out of jail for assaulting the stupid little twit. Bloody Australia! What kind of sick, demented idiot would want to live here!

December 1 - The first day of Summer!!!! You are kidding me!






Marketing the White Suffolk Breed

Prime Lambs

White Suffolk rams tip the balance

Prime lamb

- ◆ Murdeduke Ag, Winchelsea
- ◆ 4900 hectares owned and leased
- ◆ Cropping, prime sheep and stud Angus



By SHEENA COFFEY

WHY USE White Suffolk rams? For Gerard Watt, livestock manager of Murdeduke Ag, Winchelsea, the answer is simple: "They're fertile." And he should know.

This year, Murdeduke's 3000-head first-cross ewe flock, joined in two even lots, was scanned in lamb at 181 per cent and 176pc with 1pc dry.

"We spray paint our twins and I kept running out of paint - I should have been spraying the singles," Mr Watt said.

The prime lamb arm to the Murdeduke operation makes up just one part of the business which is well-known for producing quality Angus stud bulls; the herd is made up of about 350 registered females and embryo work is undertaken to fast-track genetics.

But at the 4900-hectare property a 60:40 combination of cropping and livestock is managed in-sync with each other.

The cropping regime is centred around barley, wheat and canola, with lucerne and winter wheats in a grain and graze system

to fill the winter feed gap.

This system is particularly handy when, in mid to late winter the Murdeduke team can stop hand-feeding and graze crops.

"This has meant we can cut feeding costs, and utilise existing crops for fodder with no yield penalties to the crop - it works well."

A further wing to the operation is an 1800-head free-range pig-gery rotated through the property every two years. The manure left in its wake is high in nitrogen and phosphorus, but the nutrient variability provides some management challenges.

While the stud may take up most of Mr Watt's time, the prime lamb operation has been anything but secondary in the farm's business books.

Each year, large-framed northern first-cross ewes are bought to replenish the flock.

"When you are self-replacing I feel there is too much wastage in the first two years, whereas you get a three-year-old ewe which has already had a lamb and you hit the ground running," Mr Watt said. Size is also taken into account: "you can't fill out a small frame."

Split evenly, the heaviest of the ewes are joined first from late February, for six

When you are self-replacing I feel there is too much wastage in the first two years, whereas you get a three-year-old ewe which has already had a lamb and you hit the ground running.

- GERARD WATT
Murdeduke Ag livestock manager

weeks, at a rate of one per cent. The second mob follows in mid-April.

Dividing joining into two groups has enabled crash grazing of pastures for weed control before lambing, while extending the crop grazing period without the hassle of rotational grazing lambing ewes.

It also works to stagger feed demand for finishing lambs on lucerne and means any summer rain can be exploited.

Stubble crops are also highly important to the breeding program, with ewes grazing the crop on a rising plane of nutrition at joining.

"If you can keep them at condition score three and hold that right through the year you should not have fertility problems, they're very fertile at condition score three."

The proof behind this claim was more than evident in the paddocks - scores of twins and triplets trailed behind their mothers.

Not forgetting the sires, Mr Watt is quick to add the White Suffolk rams - bought from Craig Mitchell's Gemini stud - have had a major hand in the success of the prime lamb operation.

Rams are used twice (both joinings) and



then given the rest of the year to recuperate. "We're getting value for money in our rams; they may be down a little in condition when they finish, but they have their rest." Highly adaptable and very fertile, the White Suffolks have slotted into their easy-lambing program.

Rams are picked for frame and breeding traits, particularly high growth and an average birth weight.

At scanning ewes are split up into twins/triplets and singles and lambed down on about 1000-1200 kilograms of dry matter for the singles, with twin/triplet mothers grazing 1200kg-plus of dry matter.

Lambs are weaned from about 10-12 weeks depending on the season and are placed onto lucerne in mobs of 600-700 head to start rotational grazing.

"The ewes are basically treated as a wether until the stubbles are available and then they'll go on those and fly from there."

With the assistance of GPS, the Murdeduke team sow oats between the lucerne rows at planting to fatten lambs on. "This gives a really good balance of protein and energy."

Lambs are targeted at the supermarket



■ This lambing mob of first-cross ewes, aged four- and five-years, scanned in lamb at 181 per cent.

WANTED: Good Commercial stories!!

Here is an example of a great commercial editorial story that the AWSA is keen to utilise. This one was published in the Stock & Land in August this year along with a list of Victorian Breeders.

If you have any stories, please contact a member of the AWSA committee. We need stories from all states for next years marketing campaign.



STOCK & LAND, August 20, 2009

23

Prime Lambs

in favour of fertility at Murdeduke



■ Murdeduke Ag livestock manager Gerard Watt claims the secret to high lambing percentages is a combination of a highly fertile White Suffolk sire, combined with ewes in condition score three and flushing on stubble crops.

category 43-45kg and achieve growth rates up to 350 grams a day after weaning.

"Lucerne is imperative here for fattening stock, if we didn't have lucerne we would be forced to sell stock at trade weight." The lucerne is also used to fatten steers and bulls. The first sale of lambs is usually around December, with regular lots following.

The mix of genetics and lucerne have resulted in high kill-out rates of between 49-53pc. Making 380-500 cents/kg plus skins in 2009, the lamb returns are generous.

And when taking into account the cost of the sire, production is as "cheap as chips", according to Mr Watt.

"White Suffolk rams mating at 1pc (200 ewes, two joinings) which were scanned at 181pc and 176pc with 1pc dry in 2009, secured for an average of \$700, is great value for money."

In brief

The right options

WHEN we hear the word "biosecurity" we often think about Australia's national quarantine system, but what about the equally important need for farm biosecurity?

Sheepmeat Council of Australia has warned Australian sheep producers to be vigilant about farm biosecurity and sheep traceability to continue growing the nation's sheepmeat industry.

Sheepmeat Council Australia's Kate Joseph said individual sheep producers played an important role in ensuring that Australia's sheepmeat flock maintained its disease free status.

"Sheepmeat producers can adopt simple on-farm biosecurity principles and practices to help protect their flocks from pests and diseases and in doing so prevent an emergency animal disease incident," said Sheepmeat Council of Australia President, Kate Joseph.

■ For further information visit www.sheepmeatcouncil.com.au

AUSTRALIAN WHITE SUFFOLK

www.whitesuffolk.com.au

Adams, A	Kyneton	03 5422 1163	Hobson, BDA	Burrumbet	03 5343 2434	Robinson, B & K	Moyston	03 5354 2693
Albrecht, E & H	Gnarwarre	03 5265 8180	Holland, G & A	Winchelsea	03 5267 2714	Robinson, NJ & JV	Bendigo	03 5444 5440
Allan, W & K	Hopetoun	03 5263 3037	Hooper, R, E & D	Goorambat	03 5764 1296	Rodds, DJ	Snake Valley	03 5349 2695
Baker, M, MO & SM	Baringphap	03 5475 2576	Horobale, GD & GB	Kaniva	03 5352 2375	Rogers, K & J	Soroke	03 5030 5343
Baker, R	Horsham	03 5361 2223	James, ID	Herby	03 5581 1430	Ross, JJ & AS	Elenzie	03 5999 6283
Batters, RA & JC	Sutherland	03 5495 8223	Jarvis, HA, SF & MD	Gatum	03 5574 3298	Rouch, J	Rowmans Forest	03 5727 1552
Baugartner, O & T	Coonooer Bridge	03 5495 6263	Kale, S	Hensley Park	03 5574 8214	Rowbottom, CF & SJ	St Helens	03 5568 4253
Bellchambers, M	Shelford	03 5261 3371	Kyle, LJ	Bainisdale	03 5157 7579	Saunders, AE	Horsham	03 5382 7770
Binnells, D	Sean Hill	03 5039 9501	Langsford, GM & MR	Violet Town	04 1710 1108	Schielke, K	Horsham	03 5382 0499
Boord, NF & JM & Son	Yarrara	03 5028 3302	Laigh, S	Ceres	03 5249 1380	Shepherd, BM & DM	Charam	03 5588 6280
Bransah, D & G	Via Red Cliffs	03 5028 3302	Love, RG	Violet Town	03 5798 1364	Shotton, TA & AM	Rochester	03 5488 7300
Bransson, G	Mt Duned	03 5264 5217	MacDonald, FF	Porcupine Ridge	03 5348 7530	Siggers, S & R	Goorambat	03 5764 1273
Cameron, AR	Mortlake	03 5599 2764	Malher, D & D	Wingiel	03 5287 1258	Simons, AD	Talangutuk East	08 5388 2208
Chenoweth, SC	Narain	03 5573 0233	Malone, GN & NE	Craigwin	03 5455 4314	Smith, AJ & RF	Brimpan	03 5389 9272
Collins, G	Letbridge	03 5261 7209	Maiseed, PW & RV	Tyendarra	03 5529 5241	Stamard, BA	Tallygaroopna	03 5829 8269
Cornish, CA	Miloo	03 5488 2261	Manifold, T	Kyneton	03 5422 1176	Stevens, M & D	Myamyn	03 5578 2311
Cox, A & C	Casterton	03 5582 0277	Matthews, MG	Rupanyup	03 5380 8280	Stewart, AJG	Callawadda	03 5359 8233
Creek, KS & NL	Newlyn	03 5345 7076	McConachy, P	Winchelsea	03 5267 2083	Swart, R & M	Childers	03 5634 7523
Davies, GK & J	Koroit	03 5565 8567	McCrack, LH & NJ	Cavendish	03 5674 1240	Sweeney, JW & PJ	Mudgegonga	03 5753 4534
Deppeler, D & L	Merang	03 5452 2438	McLean, ME & NL	Hopetoun	03 5080 3057	Taylor, J	Coleraine	03 5570 8233
Dodds, RA & SM	Denzilium	03 5297 0224	Mattington, PM	Rokynwood	03 5348 1348	Toshars, D & K	Echuca	03 5453 7506
Doggett, K	Bambra	03 5288 7360	Merces, E	Errra	03 5795 2650	Tippett	Newlyn	03 5342 7435
Donnan, AJ & JD	Kyneton	03 5427 0067	Milne, SJ & DJ	Brarvolme	03 5578 6327	Trewick, R & D	Linore	03 5432 6190
Eason, JO	Woomelang	03 5081 2277	Mitchell, CA & RY	Wiemeth	03 5238 9599	Tully, B	Lancetfield	03 5429 1898
Ellis, SN & JA	Ararat	03 5352 2721	Mitchell, RJ & LJ	Lockington	03 5486 2238	Udy, S	Compton	04 0704 1706
Foster, KJ, JL & SA, JL	Pimprioo	03 5384 2236	Monsen, HD & AM	Rainbow	03 5397 3514	Wake, GR & MA	Cavendish	03 5574 1254
Gadys, JE & LM	Casterton	03 5581 1965	Morgan, HG	Katandra	03 5828 8278	Weaver, GJ & EM	Balmoral	03 5570 1360
Gilpin, AR & GC	Lismore	03 5596 3588	Murphy, AF	Marong	03 5442 4084	Weidemann, A & R	Rupanyup	03 5385 5089
Graham, PG & JC	Kamsak	03 5386 1255	Newell, AW & WJ	Woomdoo	03 5599 5330	Whitless, HJ & MA	Orbost	03 5155 2774
Groddi, A & C	Mt Napier	03 5576 8538	O'Brien, L	Trendham East	03 5424 1568	Williams, JD	Shepparton	03 5393 1408
Groves, DL & EN	Bellan	03 5368 9612	Oliver, Mr GK	Inverleigh	03 5265 1493	Wilson, G & B	Inglewood	03 5438 3182
Guinane, L	Serviceeton	03 5393 1230	Pigman, DJ & MJ	Jeparit	03 5391 8202	Wiswell, J	Horsham	03 5382 2232
Habeck, G	Merredith	03 5286 1591	Polkinghorne, R, D & L	Berrinall	03 5496 5223			
Hawkar, DG	Chiltern	03 5726 1625	Porter, IS & DA	Beaufort	03 5350 7542			
Hill, GD	Kaniva	03 5393 1399	Quayle, R & A	Bellarina	03 5259 2496			
	Stawell	03 5358 5260	Rankin, J & S	Morrison	03 5341 5681			

SUPPORT YOUR LOCAL REGISTERED BREEDER

