



From the President's Desk



Greetings to all from a cold and wet Western District. It would seem that the 'winter' of years past has finally returned.

In direct contrast to the weather is the lamb market, which is as hot as ever at present. I seem to recall writing at this time last year that "prices in the eastern states were exceptional", but they almost pale in comparison to present prices.

Much has been written over the last few years regarding the decline in the national ewe flock. The current prices reflect among other things the fragile supply situation in no small part due to that ewe flock reduction. The upcoming spring ram selling season will present some challenges with a potential oversupply of terminal sires. In White Suffolks we have a great product. Present the right rams well, and I'm sure we will continue to grow our market share, just as we have steadily over the 25 years since the foundation of the AWSA.

Through this message I would like to congratulate, and thank, those members who chose to enter young sires in the Sheep CRC/MLA Genomics Pilot Project. I believe that this project is of great importance to the sheep/lamb industry in Australia, and I was particularly pleased

to be told recently that the White Suffolk breed has by far the greatest representation in the project. As I said before we have a great product. However that is not to say that we can't continue to improve the genetics we supply our commercial clients, and ultimately the end product for the consumer. I am hopeful that Genomics will be a very useful tool, allowing earlier and more accurate selection of animals, and in turn a continued refinement of an already great product.

On a different note, I am reliably informed that planning is well advanced for the 2011 National Conference to be held in Nuriootpa, S.A. These conferences are an important part of the culture of the AWSA and I recommend that members make every effort to attend.

I strongly believe that the culture of the AWSA and the great White Suffolk product are inextricably linked, and that each has enhanced the other over the initial quarter century of association. As I have said repeatedly this is due in no small part to the founders of the breed, and the way they chose to work together to bring about what was a radical change in the Australian Lamb industry. I'm sure all members will join me in once again congratulating them on, and thanking them for their foresight and resolve.

In closing, I hope that the season continues to treat you well and that your efforts in shows and sales reward you.

Regards, Steve Milne

From the Council

FINANCIAL MEMBERSHIP

Following some enquiries to the secretariat, the Federal Council points out the following to all members.

No person, persons or organisation shall be eligible to exhibit in White Suffolk classes at any show unless they are current financial members of the Australian White Suffolk Association. To be considered a current financial member they must have paid the appropriate yearly membership and fees in full.

New Members

Name	Location	Flock No	Prefix
William & Margaret Scott	Glenrowan VIC	754	Stockmans
Andrew & David Turvey	Thallon QLD	755	Oakleigh
Simone Cotter	Winchelsea VIC	756	Nangana
Peter & Heather Chapman	Mingay VIC	757	Wibemata
Stanley & Carole Dorman	Westdale WA	758	Advance Genetics
Bernie & Vikki Mickelson	Murrumbateman NSW	759	Kardinia
Michael & Ruth Wall	Braidwood NSW	760	Borrehma
Arthur & Kereth Farn	Yarck VIC	761	Glenallan
Wal & Angus Davidson	Somerton NSW	762	Clermont
Deborah Snaith	Inverell NSW	763	Swanbrook
Lex & Pauline Roberts	Delungra NSW	764	Roberts Stud

From the Secretary

Wedding

Over the past months you may have noticed my surname has now changed – that’s because I recently got married!

Dan Ward and I were married at Concordia College Chapel, Highgate SA, on Anzac Day, Sunday 25th April 2010. Our reception for 155 guests was held in the Tapestry Pavilion, Morphettville Racecourse. Andrew Frick (Gypsum Hill stud) was Master of Ceremonies for the evening.

We honeymooned in hot and humid Bali for 10 days where we enjoyed riding the elephants, white water rafting and drinking lots of cheap, cold beer!

Both Dan and I thank you all for the phone calls, best wishes and cards we received, it was most appreciated.



Shane Pfeiffer, Julie Pfeiffer, Dan & Nikki Ward, Ian Pfeiffer and Casey & Simon Work.

Change of Email Address

Please be advised that my email address has now changed to nward@adelaideshowground.com.au. Please update your email address books.

You may wish to use the Association email address info@whitesuffolk.com as an easier alternative – these emails are also forwarded to me in the office.

Annual Returns

By the time you receive this newsletter the 2010 Flock Register will be in production stage. A copy will be posted to you as soon as it is complete. Thank you to all members who promptly completed their return. It is pleasing to note that more than half of our members completed the process online this year. For those who haven’t yet attempted the online system, don’t be afraid to try. The beauty of it is that you can’t submit anything that isn’t completed correctly and if you’re in doubt, Sue and I are only a phone call or email away.



Unregistered Breeder Transfers

I have had some enquiry from members in the last few weeks regarding transferring animals to unregistered breeders. To assist in completing these transfers online we have created an unregistered breeder flock number – 999.

Transfers can be completed as you would normally by using 999 in the flock number field for the new owner. I ask that you please forward the details of any transfer made to flock 999 by fax or email. The details will be recorded in the office so that the transfer can be forwarded onto the new owner when they apply for membership with the Association.

I wish you all the best for the upcoming Show & Sale season,

Nikki Ward (nee Pfeiffer)



Tiffany Nalder (Nalvin Park stud), Michelle Pipkorn (Detpa Grove stud), Nikki, Denita Donnan (Anden stud), and Tanya Frick (Gypsum Hill stud)



One for the Ladies

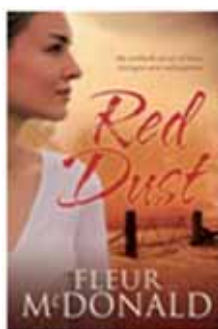
Perhaps you might like to indulge in some light reading during the cold winter months?

One of our own members, Fleur McDonald (Kuloomba Stud, Flock 230) is an author and has just released her second novel, titled *Blue Skies* which (believe it or not) features White Suffolk sheep.

Fleur's first novel, *Red Dust*, has just been shortlisted for the Romantic Elements category of the Romance Writers of Australia's Romantic Book of the Year – congratulations Fleur.

A little information about Fleur and her new novel *Blue Skies* is listed below. For more information visit her website www.fleurmcdonald.com.

About the Author – Fleur McDonald
Fleur grew up in Orroroo, South Australia but completed her secondary education in Adelaide. After school she spent a couple of years jillarooing in South Australia and Western Australia. Fleur lives with her husband Anthony, and two children, on a station near Esperance in Western Australia. Fleur is very involved in the daily management of their 8000 acres – in which they run Angus cattle and White Suffolk sheep.



About "Blue Skies"

In the tradition of Rachael Treasure and from the bestselling author of *Red Dust*, *Blue Skies* tells the inspirational story of a young woman battling to save the family farm no matter what it takes.

Armed with an honours degree in Agribusiness, Amanda Greenfield dreams of employing all the skills she's learnt at college to help her father turn the family farm from a debt-ridden, run-down basket case into a thriving enterprise. Then tragedy strikes with the death of Amanda's mother in a car accident. Wracked by grief and guilt, and wearied by the long struggle to keep Kyleena a going concern, Amanda's

father argues that they should sell up and get on with their lives away from the vagaries of drought and fluctuating stock and crop yields.

Having inherited half the farm from her beloved mother, whom she also grieves for, Amanda determines to summon all her strength, grit and know how to save Kyleena. Along the way she faces mixed fortunes in both love and life...



Superwhites Update

New Chairman

At a recent committee meeting, the Superwhites Committee unanimously supported Andrew Heinrich, 'Ella Matta' as the new Chairman with ex-chair Troy Fischer, 'Ashmore', to remain on the committee. We welcome Aphid into this role and look forward to his positive contribution.

Series 15 Team

The committee recently selected the Series 15 team of young sires to be progeny tested across the group. The selections were made with a focus on commercial suitability, outstanding ASBVs for key traits, genetic diversity and links to the CRC Information Nucleus research program. The average figures as of 15/6/10 of the Series 15 ram team are shown below.

	BWT	WWT	PWWT	PFAT	PEMD	PFEC	Carcase+	Lamb2020
Series 15 Average	0.17	9.7	16.1	-0.6	2.0	-19.3	205	115



Annual Conference

For the past 7 years the Superwhites group has held its annual meeting in conjunction with the Meat Elite Poll Dorset Breeding group at a different location in Australia. In a move to work more closely with the AWSA, Superwhites members will attend the AWSA conference in the Barossa Valley, SA as well as hold their 2011 AGM during the conference.

Further Information

Contact: Andrew Heinrich, Chairman
Phone: (08) 8559 6107
Email: ellamatta@bigpond.com

<http://www.whitesuffolk.org.au/superwhites>



2011 AWSA NATIONAL CONFERENCE & ANNUAL GENERAL MEETING

February 13-16, 2011

at Nuriootpa, in SA's beautiful Barossa Valley

Planning for the 2011 National White Suffolk Conference is well underway and is set to be held at the Nuriootpa Sports and Function Centre located within Centennial Park and the Barossa Valley Tourist/ Caravan Park at Nuriootpa, South Australia.

The conference will commence on Sunday afternoon, February 13, 2011 and conclude after breakfast on Wednesday, February 16. Conference participants will then have the option to visit local studs in the region at their own leisure or enjoy some of the many attractions the Barossa is renowned for.

An invitation has been extended to "Superwhites" to host their AGM at the conclusion of the conference after breakfast on Wednesday morning.

Program – "Mate to Plate"

The program is still being finalised and is subject to change but the ground work has been done to cover the following topics : fertility and getting the most out of your A.I. program, nutrition and custom made feed rations, efficient shearing shed and sheep yard design, training a working dog demonstration, worm burdens and testing for genetic evaluation, breed marketing - increasing market share in a saturated market place, MLA market outlook for lamb, domestic and international marketing initiatives and LAMBPLAN - challenges for White Suffolk breeders addressing BWT, WEC & indexes.

We are pleased to announce that we will be able to spend an afternoon at Turretfield Research Centre/CRC trial site where we should be able to view progeny of White Suffolk sires and learn more about the pilot SNP chip trial and what's in it for us as ram breeders.

A casual BBQ tea is being organised at Bethany Reserve on Monday night on our way back from Turretfield followed by a more formal dinner and entertainment at Pindarie Winery on Tuesday evening. Bring your partners along! We will be putting together a "chic's flyer", a list of local craft, antique and patch work shops to keep the ladies busy.

The full program & packages will be in the next newsletter. Please note that packages will be for the conference only and participants will need to book their own accommodation. The Barossa Valley Tourist Park is highly recommended and has a good range of cabins at reasonable rates next to the venue. The cabins have been placed on hold for us until early January but it is recommended to book early. 3 & 4 star motel accommodation is also available within a 10 minute walking distance at Vine Inn and Vine Court.

www.barossatouristpark.com.au

cabins, powered & unpowered sites Ph: 08 8562 1404

www.vineinn.com.au

Vine Inn (3 1/2 star) & Vine Court (4 star) motel accommodation Ph 08 8562 2133



Nuriootpa Sports and Function Centre

PERFORMANCE plus *Genetics*

Putting the Muscle into Growth

**PROVEN SEMEN SIRES
TO BUILD CARCASE
AND
BENCHMARK YOUR
NEW SIRES**

PENDARRA 075492

WT 16.4 FAT -0.6 MUSCLE 1.7

Accuracy 95% 192 Progeny/8 Flocks

PENDARRA 075630

WT 15.7 FAT -0.2 MUSCLE 1.9

Accuracy 98% 722 Progeny/22 Flocks

www.pendarra.com

Where are they now?

The Australian White Suffolk Association is celebrating its 25th year. So we thought we would catch up with our foundation members and see what they are up to now.

Many are still members and actively involved in the development of our breed. Some have passed the management of their studs on to the next generation and their stud breeding continues.

We have asked them.....

- Why did you decide to breed White Suffolks?
- What has been the highlights of being involved with the breed?
- What are you doing now?

Here is what they had to say:

Flock No 9 - "Allendale"

Founded by Graham Day



The Day family believe being involved in the evolution of the White Suffolk breed has been a most rewarding experience: We think the White Suffolk Breed has successfully combined most of the best traits of the Suffolk and Poll Dorset breeds.

This in our opinion was the aim of creating a new terminal sire breed and the commercial acceptance of the breed has been quite remarkable.

A great deal of the breed's success can be attributed to the skill and vision of the breeders in the early years of the breed's development.

The aims of breeding excellent White Suffolks has been, and should always be, focused on successful commercial traits, e.g. fast growth, quality carcasses and easy care attributes. Excellent Suffolk 'type' is the breeds guarantee of recognition in the lamb industry. Last year (2009) has seen some changes in the structure of the Allendale Studs and properties. Prue and Graham have moved and are living in the township of Bordertown. Lachlan and Alastair each have some heavy soil type country and also some lighter soil type country. Lachlan has the majority of the White Suffolk Stud and Alastair has the Suffolk and Poll Dorset Studs. The Poll Hereford cattle stud has been divided equally.

We as a family will support the White Suffolk breed and follow its success in the lamb industry with great interest.



Flock No 10 - "Alkoomie"

Founded by Ralf Speirs

WHY DID YOU DECIDE TO BREED WHITE SUFFOLKS?

It had been clear for a number of years that commercial prime lambs producers had been looking for a Clean Pointed White Terminal Sire with the Structural Traits for ease of lambing - high survival rates with High Lean Growth and the easy care management features of the SUFFOLK.

Professor Ewan Roberts had recognized this too and set up a Research Breeding Program and was proving that these aims were achievable . A number of like minded, fellow Suffolk breeders were interested in setting up breeding programs and were supported by breeders of other breed types too. So with very experienced breeders of Terminal Sire types of sheep committed to the idea and prepared to commit their resources, energy and time to the ideals and not be distracted or derailed by negative interjectors or temporary setbacks, it was time to do more due diligence .

...Flock No 10 - "Alkoomie" continued...

It was critical to have the ingredients of open minded breeders with clear objectives - support for an open breed policy - and increasing numbers of foundation sheep suitable for a Prime Lamb Terminal Sire Breeding Program. With all of these things being clearly available and committed, it was time to join the mission - step up and have a real go. Our first lamb drop was in 1985.

WHAT HAVE BEEN THE HIGHLIGHTS OF BEING INVOLVED IN THE BREED?

The number of prime lamb sire breeders from all around Australia who have joined the White Suffolk Initiative over the 25 years.

The great camaraderie - fellowship - honesty of purpose - sharing of genetics and support amongst all breeders - all aimed at supporting the commercial lamb industry. The like of which was tested seriously with the finding of Spider Syndrome and later OJD disease amongst some flocks across Australia. These challenges were methodically and systematically researched and managed to be support for all the breeders concerned, which led to us being involved in helping to

-find a DNA test for Spider Syndrome identifying carrier sheep being available commercially to the world to manage this Genetic Disorder.

-with OJD, a much more compassionate scheme of control & management for infected flocks and a more positive & accurate testing protocol being introduced across all States. For those fellow breeders with flocks infected, there was generosity and consideration extended in many and varied ways:

Within breed testing of animals for Suitability of Purpose for various traits.

The uptake, understanding & use of a Worlds Best Practice - Performance Recording Scheme with great & continuing support from researchers and Field Staff.

The Market Share of the Terminal Sire market that has been achieved in recent years is great testament to the soundness of the Aims & Objectives & Open Breed policy set at Foundation and so skillfully managed by breeders all around Australia.

Lasting true Friendships.

WHAT ARE YOU DOING NOW?

We moved into our new home in Warrnambool, Anzac Day 2002.

My interests revolve around woodworking, mostly with Blackwood Timber milled from our Heywood property. With six children and thirteen grandchildren, aged from 22 years to 4 years, they are continuing to need new furniture, toys, games, chests of draws, nests of tables, TV units, crystal cabinets, dining tables & chairs, chess boards, bowls & vases etc. etc.

Beverly has continued with her floral art and also developed very high skill standards in embroidery with the South Western Branch of the Embroidery Guild, Victoria.

We together enjoy Probus activities - being part of a Retirees Organization and social old time dancing each Saturday night.

Being part of these organizations also means taking office too, to help share the load in turn. Garden needs attention too.

With families in Mt Gambier - local - Tathra - Ballina - Brisbane and Mackay we have lots of Aussie travelling seeing the North and Inland where we had not travelled whilst we had property and livestock.

A handicapped niece Kathryn and goddaughter of Beverly's has committed to paraplegic twin sculls rowing and that has taken us, in support, to Germany, Italy and then to Beijing where she and her rowing partner achieved a silver medal - they are now aimed at England in 2012 and training hard on a scholarship at the National Institute of Sport in Canberra - another stop over for us and more travelling for us!

It has been great to keep in touch also with White Suffolk Breeders, their families and their sheep all around Aussie and we feel very pleased to have been part of such lovely fellowship of people and to witness the commercial acceptance of a great breed of sheep. It is wonderful to have such a great bench marking

system and we can prove

where we came from,

where we are at now

and what we need

to do to continue to

meet the needs of the industry.

Congratulations

to all breeders

- committees -

federal council

members

- secretarial

staff - data

management and

newsletter people for your very

considerable commitment and input.

May the next 25 years be as successful as the last 25 years.



Kindest regards and best wishes to all.

Ralph and Beverly Speirs.



Flock No 13 - "Kinmel"

Founded by Nigel Bingham

WHY DID YOU DECIDE TO BREED WHITE SUFFOLKS?

Our original decision to breed White Suffolks back in 1984/5 was due to the requests we were getting for a sheep with the fantastic attributes of the black Suffolks with white points. Hence our decision to build our flock from our existing Suffolk ewe base.

WHAT HAVE BEEN THE HIGHLIGHTS OF BEING INVOLVED IN THE BREED?

With selective breeding over the years we have been able to maintain a high standard of stock and quality flock rams. This has been the highlight over the last 25 years to be able to provide quality stock. Although our flock has always stayed around 50-60 breeding ewes, this has enabled us to set a type which suits our market. We also continue to run our pure Suffolk flock as well.

WHAT ARE YOU DOING NOW?

Our continuing aim is to try and maintain true Suffolk type and quality stock.
Nigel, Sonia, Nicholas, Samuel & Joshua Bingham

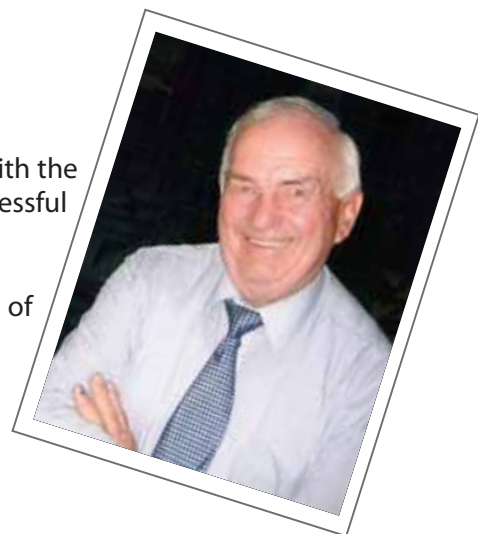
Flock No 14 - PENRISE

Founded by Kevin Moore

WHY DID YOU DECIDE TO BREED WHITE SUFFOLKS?

Our stud's inception came about for three main reasons:

1. We had a liking for the Suffolk sheep through our association and friendship with the owners of Kinmel and Cote Hele, both of which had very good sheep with successful New Zealand bloodlines.
2. The challenge after 33 years of stud breeding was to see if we were capable of contributing to the breed.
3. The expectation that clean headed, strong constitution, easy lambing sheep would be commercially acceptable.



WHAT HAVE BEEN THE HIGHLIGHTS OF BEING INVOLVED IN THE BREED?

The uptake of the breed has exceeded our strong expectations, to the point where they are readily saleable and breeding has been enjoyable and rewarding.

Dale's son, Lochlan, has a stud as well giving three generations of involvement.

Our fervent hope is that the initial ideals for the breed will not be compromised. We do not need to breed a clean-faced Poll Dorset.

WHAT ARE YOU DOING NOW?

We are still living in the Coal River Valley in Southern Tasmania. In this 25 year period we have had two good seasons! On a personal note as a Foundation Committee Member I was appalled to see the decision to deem the Suffolk breed as 'any other breed'. I find this bordering on insulting to the instigators of our breed, carrying no more relevance than a wool breed or long wool breed. Surely this could be corrected.

*Regards to all
Kevin Moore*



Introduction of outside genetics

In 2003, By-law 5 (Flock Book – Appendix Flock Book) was changed, dropping the requirement for 50% Suffolk blood. The subsequent wording of the By-law led to some confusion as to the introduction of outside genetics, and the eligibility of sheep for exhibition at shows.

Following a Federal Council meeting in July 2009, the following definition regarding the inclusion of 'outside genetics' was inserted into the 2009 AWSA Flock Book. This was in no way a change to the rule, but merely a clarification of the wording. Federal Council believes that this wording of By-law 5 makes it far easier to determine the status (WS/App/AOB) of an animal.

5. Flock Book - Introduction of Outside Genetics

The use of outside genetics is restricted to sheep that have a pedigree and are registered with a recognised breed society, or (by application to and approval by the AWSA Council) sheep with a verified full pedigree.

When outside genetics are introduced, the following rules apply:-

1. White Suffolks crossed with Any Other breed will produce progeny that are Appendix White Suffolks
2. Appendix White Suffolks crossed with White Suffolks will produce progeny that are White Suffolks
3. Appendix White Suffolks crossed with Appendix White Suffolks will produce progeny that are Appendix White Suffolks
4. Appendix White Suffolks crossed with Any Other breed will produce progeny that are Any Other Breed

All AWSA members should make themselves aware of the status of animals they intend to exhibit at shows to ensure they are eligible. It is also AWSA policy that animals that do not satisfy the definition of a White Suffolk as defined by By-law 5 are clearly identified in sale catalogues. In the case of Appendix rams included in a sale, the Federal Council requests that they be clearly identified with the abbreviation App.

The LAMBPLAN 23 Breed Code

It should also be noted that any animal born into a White Suffolk flock that is a LAMBPLAN member flock will be identified under a 23 breed code. This does not deem that animal to be a 'White Suffolk' unless its pedigree satisfies the definition of a White Suffolk under By-law 5.



FarmReady grant gets Young Guns fired-up

By *MIRANDA KENNY*

Young farmers are set to benefit from a \$61,333 federal grant aimed at tackling climate-change challenges in the Mid North of South Australia.

Funding for the FarmReady Industry grant was announced in late May and will go towards a Young Sheep Producers Responding to Climate Change Challenges project, run by the Mid North Young Guns group.

Group coordinator Kate Ridgway (pictured with Mid North Young Guns members Adrian Cook, Kadlunga, Mintaro; Andrew Hall, Wirrilla, Manoora; and Rob Hall, Peppermint Ridge, Mintaro), said the project would increase awareness of how climate change and climate variability could affect livestock production businesses.

The grant would allow the group to hold a series of six workshops and run two on-farm pasture trials.

"These are all aimed at enhancing producers' knowledge of climate variability," Ms Ridgway said. "There is also an on-farm trial component including trialing pasture varieties suited to the region."

Workshop topics would include pasture and grazing management, sustainable natural resource management and animal health requirements, water planning and optimisation, sheep genetics, carbon emissions, and a regional field trip.

The first workshop was held on Friday 9th July at "Angle Farm", Wasleys, and hosted by group members Troy and Nette Fischer, Ashmore White Suffolks. The day was delivered by Sheep Genetics specialists Sam Gill and Luke

Stephen and topics covered included:

- What is an ASBV?
- Current market information
- Using ASBVs in a prime lamb operation
- Key traits in selecting Merino mums
- Visually assessing rams - what to look for

Acting deputy chairperson Andrew Hall said he was excited for the group and the opportunities available because of the funding. The pasture trials will be run on the Hall's farm at Manoora and at acting chairperson Peter Angus' farm, Maroola White Suffolks, at Mallala.

Seed Distributors have provided valuable support by donating and sowing seed for the project. A total of 38 pasture forage varieties will be trialed at each 1-hectare site.

"It's a way of seeing which varieties can fit into different areas and systems," Seed Distributors technical support officer Tom Damin said. "We will try and put a mix of everything in and see what works best in the two different areas."

The group plans to hold a field trip to these sites later this year for Young Gun members and the wider farming community.

The group was formed as part of a South Australian Lamb Development Team program.

The project is supported by funding from the Australian Government Department of Agriculture, Fisheries & Forestry under FarmReady, part of Australia's Farming Future.

Phone: 08 8842 6271.



Story and photo courtesy of the Stock Journal

Mid North Young Guns coordinator Kate Ridgway with committee members Adrian Cook, Andrew Hall and Rob Hall.



Terminal LAMBPLAN Analysis Update

Sheep Genetics will implement a number of important updates to the Terminal LAMBPLAN analysis on July 15th 2010. These updates are from recommendations made by the Sheep Genetics Technical Committee. The changes will bring the Terminal analysis in line with the Maternal and Merino breeds, which have already implemented many of these changes.

Updated genetic parameters

The first change is an update of the parameters used in the analysis. As the number of records in the LAMBPLAN database increases, the heritability of traits and the genetic correlations between traits have been recalculated to ensure that the parameters accurately reflect the current population. As a result, the heritability for any given trait in the analysis for some traits may be up to five points lower than the values previously used. Table 1 below shows the updated heritabilities (on the diagonal) for key traits, and the indicative genetic correlations between traits.

Lower heritabilities for traits will mean that there will be less variation in ASBVs than previously reported.

WWT	0.15										
MWWT		0.06									
PWT	+++		0.20								
AWT	+++		+++	0.35							
PFAT	-		-	-	0.25						
PEMD	-			-	++	0.30					
YGFW	+		+	+	-		0.29				
PWEC			+		-	-		0.20			
PSC	++		+++	++					0.30		
NLW	+		+	++			-		++	0.04	
	WWT	MWWT	PWT	AWT	PFAT	PEMD	YGFW	PWEC	PSC	NLW	

- / + = low, - - / + + = moderate, - - - / + + + = high

Table 1: Updated Terminal LAMBPLAN genetic parameters for key traits. Heritabilities are on the diagonal; indicative genetic correlations heritabilities

However, the correlation between the new and old ASBVs remains very strong, meaning that there should not be a large degree of re-ranking on individual ASBVs.

To minimise the impact that these changes on the ASBVs for the current drop of animals, the way the base is set in the Terminal analysis has also been updated. The base was originally set at zero for the average of animals born in 1990. This has been changed, with the base now set as the current ASBV average for the 2000 drop animals.

This will reduce the change to ASBVs for current drop animals, and provide stability due to the larger number of animals used.

Sire x Flock model

The introduction of a Sire x Flock model brings the Terminal analysis in line with the Maternal and Merino breeds, which implemented this model last year. The Sire x Flock model accounts for differences in sire performance between different flocks and years that can occur under different conditions.

The Sire x Flock model helps when a sire has been used in a number of different flocks and years, and the progeny in one particular flock don't perform as expected. This may be due to environmental reasons, heterosis, the type of ewes the sire was joined to, or poor data quality. The Sire x Flock model reduces the impact of this variation has on the sire's ASBVs, resulting in increased stability in all ASBVs.

Updated reproduction model

The reproduction model has been updated to provide more accurate and reliable NLW ASBVs. The previous model only compared the reproduction records for ewes against other ewes born in the same year. The new reproduction model compares all the ewes that lambed in a particular season against each other, regardless of year of birth. This provides more stable management groups and better accounts for seasonal variations.

Associated with the reproduction model is a service sire filter. When more than 30% of ewes joined to a particular ram fail to get in lamb, the service sire filter removes the reproduction records for those ewes. This is to ensure that ewes that failed to get in lamb because of fertility problems with the mating sire do not have their NLW ASBVs unfairly penalised.

The Embryo Transfer (ET) model has also been updated. Where breeders have recorded the IDs for recipient dams, the maternal effects (ie maternal weaning weight) are now allocated to the ET recipient dam instead of the ET donor dam. When the recipient dam ID is unknown, a "dummy" recipient dam is created in the analysis to ensure that the maternal effects are not attributed to the lamb's genetic mother.

If a foster dam ID has been recorded, the maternal effects are also now attributed to the foster dam instead of the genetic dam.

Where recipient dams of different breeds are used, it is very important that the ET lambs are split into separate management groups, according to the breed of their recipient dam.

Terminal LAMBPLAN continued

Changes to indexes

As these updates will cause changes in ASBVs, there will also be a flow-on effect to the indexes. The reduced variation in ASBVs will mean reduced variation in index values, and will alter the previously reported response over 10 years for the Carcase Plus and LAMB2020 indexes.

Carcase Plus now has a relative response of 65% on increasing PWWT, 5% on decreasing PFAT and 30% PEMD instead of the original 60:20:20 ratio. Carcase Plus now effectively holds fat depth constant over ten years, instead of making further reductions.

The updated relative responses for both Carcase Plus and Lamb 2020 are shown in **Figure 1**.

The updated gains for individual traits over ten years for both LAMB2020 and Carcase Plus are shown in **Figure 2**. The lower gain for growth in both updated indexes is due to the lower heritability, and the reduction in the range for the ASBVs.

In addition to the trait responses in Figure 2, LAMB2020 will also decrease PWEC by approximately 27% over the next 10 years.

It is critical that the new ASBVs for animals are compared to the breed averages and percentile bands table *from the same analysis*. The updates will cause significant changes to individual animals ASBVs and will also change the current averages and genetic trends.

If you have any queries or require any further information please contact the Sheep Genetics staff.

Figure 1: Index Relative Response

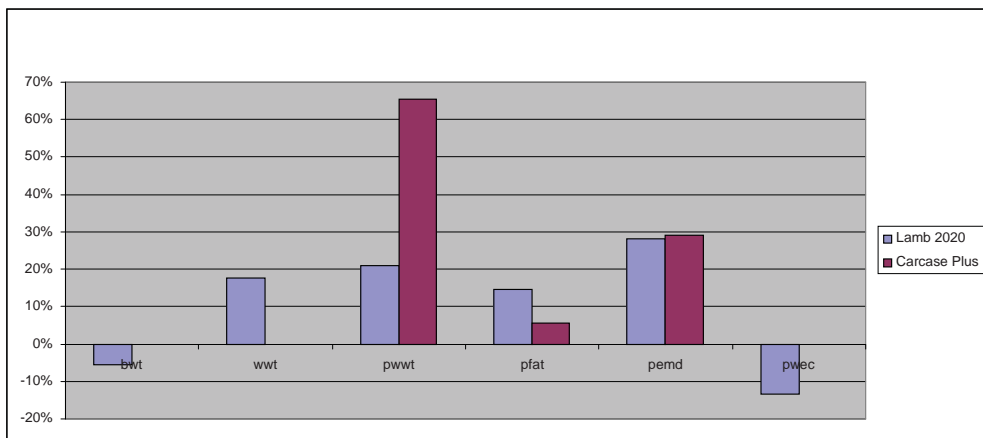
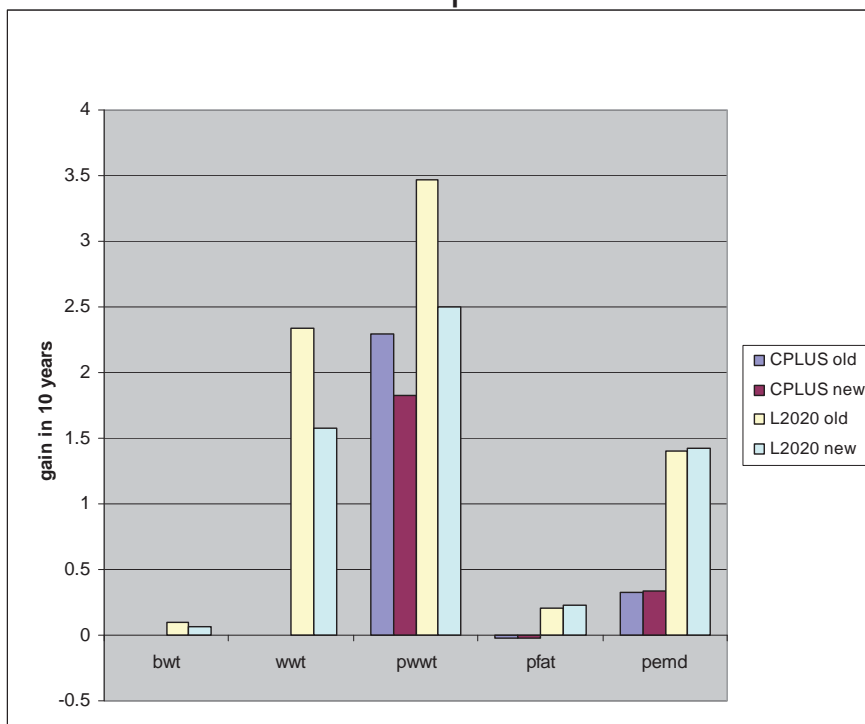


Figure 2: Index Comparison with new and old parameters



It is strongly recommended that you list the appropriate percentile band table in your sale catalogue so buyers can determine where animals rank within the current analysis.



DUBBO SHOW RESULTS 2010

May 8th 2010

141 White Suffolk sheep shown by 19 Exhibitors

Judged by Craig Mitchell

Exhibitors included

Braden & Lachlan Gilmore "Premier" Oberon,
 Andrew Herron "Pride of the Downs" Pittsworth, QLD,
 Neil Williams "Ashburnia" Orange,
 Amando & Maria Dissegna "Warburn" Griffith,
 Alan & Jennifer Ireland "Bygo" Tullibigeal,
 Michael Barton "Yarrahappini" Wellington,
 Kate & Henry Thompson "Baladonga" Coolah,
 Craig, Samuel & Lauren Henry "Kanoona Park" Curban,
 Jason & Vicki Barker "Timor" Parks,
 John Jamieson "Wattle Park" Finley,
 Jarrod Alcorn "Jarrabay" Yass,
 Farrer Ag. High School "Farrer" Tamworth,
 St Paul's College "St Paul's" Walla Walla,
 Yanco Ag. High School "McCaughey" Yanco,
 Victoria Patterson "Kinellar" Gooloogong,
 Julie Wiesner "Glengarry" Walla Walla,
 Ian Gilmore "Tattykeel" Oberon,
 Eric, Joyce & Daryl Dixon "Ashbank" Dubbo,
 Scott & Elaine Woodley "Kurraview" Dubbo.

NOVICE RAM born between 1st April & 31st May
 No more than 2 teeth, shorn.

- 1st McCaughey
- 2nd Yarrahappini
- 3rd McCaughey

OPEN RAM born between 1st April & 31st May
 No more than 2 teeth, shorn. 10 entries

- 1st Ashbank
- 2nd Kanoona Park
- 3rd Timor
- 4th Kurraview
- 5th Warburn

NOVICE RAM showing milk teeth only, shorn.
 Born between 1/6-31/7/09.

- 1st Farrer

OPEN RAM showing milk teeth only, shorn
 Born between 1/6-31/7/09 16 entries

- 1st Tattykeel
- 2nd Glengarry
- 3rd Warburn
- 4th Bygo
- 5th Bygo

NOVICE RAM showing milk teeth only, shorn
 Born after 1/8/09. 7 entries

- 1st Premier
- 2nd Yarrahappini
- 3rd Farrer.

OPEN RAM showing milk teeth only, shorn
 Born after 1/8/09. 11 entries

- 1st Tattykeel
- 2nd Kanoona Park
- 3rd Premier
- 4th Tattykeel
- 5th Wattle Park.

NOVICE RAM born after 1st April no more than 2 teeth Woolly.
 1st Baladonga
 2nd Baladonga.

OPEN RAM born after 1st April
 No more than 2 teeth. Woolly. 3 entries
 1st Warburn
 2nd Warburn
 3rd Baladonga.

PAIR of 2 RAMS born after 1st April
 No more than 2 teeth, shorn. 7 entries
 1st Tattykeel
 2nd Ashbank
 3rd Glengarry
 4th Wattle Park

RAM over 1 1/2 yr. Woolly or Shorn. 2 entries
 1st Tattykeel
 2nd McCaughey.

RAM OBJECTIVE MEASUREMENT CLASS. 16 entries
 1st Bygo
 2nd Kanoona Park
 3rd Jarrabay
 4th Kurraview
 5th Warburn
 6th Kinellar
 7th Glengarry

Champion Ram: Tattykeel Reserve: Ashbank

OPEN EWE born between 1st April & 31st May
 No more than 2 teeth, shorn. 10 entries

- 1st Kurraview
- 2nd Kurraview
- 3rd Ashbank
- 4th Wattle Park
- 5th Warburn

NOVICE EWE showing milk teeth only, shorn
 Born between 1/6-31/7/09. 9 entries

- 1st McCaughey
- 2nd Farrer
- 3rd Farrer
- 4th Ashburnia

DUBBO SHOW JUDGES REPORT 2010

After a 'short' trip up the road to Dubbo (of some 11hrs) and not knowing what to expect as far as the numbers or quality of the sheep was concerned, on arrival I was very happy to find approximately 150 head of very good sheep penned for my adjudication.

I was very pleased to be able to find four or five sheep in every class that I considered were of exceptional standard. They would stand up well with the best sheep of any breed, anywhere.

My champion ram, that went on to be the supreme champion White Suffolk was a very correct and well balanced sheep and a good top line. Balance and correctness are very important in stud breeding, but to be in tune with the commercial industry the top sheep also have to have production advantages and I'm pleased to say this ram did, having outstanding muscling and yield.

My reserve champion ram was also a correct ram with very good carcass attributes, had excellent sire strength and also displayed very good White Suffolk breed type.

My champion ewe had outstanding balance and White Suffolk type; she was correct, well balanced and had wonderful muscling without losing her femininity. My reserve champion ewe was also a well balanced ewe with an excellent carcass and breed type, but just lacked a little of the champion's maternal strength.

I believe the quality of the White Suffolk sheep in this showing was exceptional and a credit to the both their breeders and the White Suffolk breed.

I would also like to acknowledge the schools that participated at Dubbo. Their sheep were of a very high standard, but the thing that impressed me most was the way the students presented their stock and conducted themselves. They were a credit to their schools, parents and hopefully they can remain in the industry.

Finally, I would like to thank Dubbo Show committee and the White Suffolk breeders for their hospitality and the opportunity to judge at this outstanding show.

Craig Mitchell

OPEN EWE showing milk teeth only, shorn

Born between 1/6-31/7/09. 11 entries

- 1st Glengarry
- 2nd Tattykeel
- 3rd Ashbank
- 4th Wattle Park
- 5th Bygo

NOVICE EWE showing milk teeth only, shorn

Born after 1/8/09. 7 entries

- 1st Premier
- 2nd Baladonga
- 3rd Ashburnia
- 4th Farrer.

OPEN EWE showing milk teeth only, shorn

Born after 1/8/09. 8 entries

- 1st Kurraview
- 2nd Tattykeel
- 3rd Premier
- 4th Bygo

NOVICE EWE born after 1st April

No more than 2 teeth. Woolly.

- 1st Farrer
- 2nd Baladonga
- 3rd Farrer

OPEN EWE born after 1st April

No more than 2 teeth. Woolly. 3 entries

- 1st Wattle Park
- 2nd Farrer
- 3rd Warburn

PAIR of 2 EWES born after 1st April

No more than 2 teeth. Shorn. 8 entries

- 1st Tattykeel
- 2nd Bygo
- 3rd Wattle Park
- 4th Ashbank

EWE over 1 ½ yr. Shorn or Woolly. 6 entries

- 1st Farrer
- 2nd Jarrabay
- 3rd Baladonga

EWE OBJECTIVE MEASUREMENT CLASS. 13 entries

- 1st Warburn
- 2nd Jarrabay
- 3rd St Paul's
- 4th Jarrabay
- 5th Farrer

**Champion Ewe: Kurraview
Reserve: Tattykeel**

Keith McIntosh Memorial Award-Sires Progeny Group.

1st Tattykeel - 6 entries

Group of 1 Ram & 2 Ewes showing milk teeth only. 11 entries

- 1st Tattykeel,
- 2nd Kurraview
- 3rd Ashbank
- 4th Glengarry

Best White Suffolk Head. Ram or Ewe 8 entries

1st Baladonga

Supreme White Suffolk: Tattykeel

Most Successful Exhibitor: Tattykeel

Australian Sheep & Wool Show, Bendigo 2010

July 16-18, 2010

Judge: Mr Graham Wilson

Exhibitors: 21

Entries: 189

Novice Ram

- 1 Sunnydale
- 2 Sunnydale
- 3 Sunnydale

Ram U 1 1/2 yrs in Wool

- 1 Warburn
- 2 Rene
- 3 Glenarbian

Ram U 1 1/2 yrs born in April

- 1 Ashbank
- 2 Wingamin
- 3 Wingamin

Ram U 1 1/2 yrs born in May

- 1 Glenarbian
- 2 Kubura
- 3 Wingamin

Pair of Rams born April - June

- 1 Wattle Park
- 2 Ashbank
- 3 Glenarbian

Ram U 1 1/2 yrs born in June

- 1 Wingamin
- 2 Kubura
- 3 Glenarbian

SENIOR CHAMPION RAM: WARBURN
RESERVE SENIOR CHAMPION RAM: ASHBANK

Junior Pair Of Rams

- 1 Ashbank
- 2 Warburn
- 3 Rene

Ram U 1 1/2 yrs born in July

- 1 Gemini
- 2 Rene
- 3 Kubura

Ram U 1 1/2 yrs born after August

- 1 Wattle Park
- 2 Wattle Park
- 3 Wingamin

Ram lamb

- 1 Wingamin
- 2 Wattle Park
- 3 Merribrook

JUNIOR CHAMPION RAM: WATTLE PARK
RESERVE JUNIOR CHAMPION: WATTLE PARK

GRAND CHAMPION RAM: WARBURN

Novice Ewe

- 1 Kookaburra Park
- 2 Kookaburra Park

Ewe over 1 1/2 yrs with LAF

- 1 Wattle Park

Ewe U 1 1/2 yrs in the wool

- 1 Rene stud
- 2 Ashbank
- 3 Glenarbian

Ewe U 1 1/2 yrs born April-May

- 1 Ashbank
- 2 Duenclyn
- 3 Wingamin

Pair of Ewes

- 1 Ashbank
- 2 Sunnydale
- 3 Gemini

Ewe U 1 1/2 yrs born June-July

- 1 Ashbank
- 2 Sunnydale
- 3 Glenarbian

Ewe U 1 1/2 yrs born after August

- 1 Rene
- 2 Belladonna
- 3 Glenarbian

Ewe lamb

- 1 Wingamin
- 2 Induro

CHAMPION EWE: ASHBANK
RESERVE CHAMPION EWE: RENE STUD

Breeder's Group

- 1 Ashbank
- 2 Wingamin
- 3 Glenarbian

Sire's Progeny Group

- 1 Ashbank
- 2 Wattle Park
- 3 Rene

SUPREME CHAMPION WS EXHIBIT: WARBURN
MOST SUCCESSFUL EXHIBITOR: ASHBANK
SUPREME INTERBREED GROUP: ASHBANK

Thanks to Deb Shillabeer for getting these results to us just in time for printing.



Show Photos 2010

DUBBO SHOW

CHAMPION RAM
TATTY KEEL



reserve CHAMPION RAM
ASHBANK



CHAMPION ewe
KURRAVIEW



Reserve CHAMPION ewe
TATTYKEEL



BENDIGO SHOW

Grand Champion Ram
WARBURN



Junior Champion & Reserve
Junior Champion rams
WATTLE PARK





Sheep Genomics

All of us have recently become more aware of the potential role that 'Genomics and whole genome selection' will have in the breeding programs of the future. In this article I will attempt to cover some of the current issues and give some indication of where we sit at the moment.

In March this year I attended a 'Genomics masterclass' workshop, run jointly by the Beef CRC, Sheep CRC and MLA. As the result of that workshop, a reference group to be known as the Cattle & Sheep Genomics Research, Development & Extension Group, has been formed representing the three organisations.

The overriding objective of this group is to 'review policies and major issues related to genomic-assisted selection, as they develop in the sheep and cattle industries'.

The presentations and discussions of this workshop highlighted several key points and technical issues regarding the use of genomics and the incorporation of genotypic information into current genetic evaluation systems. They include:-

SINGLE GENES OF LARGE EFFECT ARE RARE

(i.e. the vast majority of traits are as a result of the actions of a number of genes).

- therefore large populations of well recorded animals are needed for discovery, validation and calibration of markers that are of small effect.
- these populations need to be relevant to the herds or flocks using the technology.

This is where we are fortunate to have the Sheep CRC Information Nucleus Flock. In terms of genomics it is doing exactly what it was designed to do – collect large amounts of phenotypic and genotypic information from animals representing a wide cross-section of the Australian sheep industry.

SYSTEMS ARE IN PLACE TO USE PHENOTYPES AND GENOMIC VALUES TO CALCULATE BREEDING VALUES (ASBVS).

- Still just ASBVs – traditional measures can be enhanced by genomics and are best utilised jointly in one analysis.

The results we will see will be similar to present. The Genomic information will merely enhance the accuracy.



THE RELEVANCE OF GENOMIC CONTRIBUTION TO BREEDING VALUES DECAYS OVER TIME

- prediction equations need to be regularly re-evaluated
- need to continue to collect information and build the data set of phenotypes and genotypes on current relevant animals

This change in the relevance or utility of the Genomic contribution is due to the change in gene frequency in the population as breeders make selection decisions, hence the need to continue to collect information on the current relevant population.

BIGGEST ADVANTAGES FROM GENOMICS COME FROM DECREASED GENERATION INTERVAL, INCREASED ACCURACY AND INFORMATION ON HARD TO MEASURE TRAITS

- Genomic information will improve accuracy and reduce generation interval thus increasing the rate of genetic gain

The ability to make selection at a much younger age than is currently possible has the potential to greatly reduce generation interval. This is most apparent in situations where in traditional breeding programs there is long time interval between selection and the measurement of the relevant trait.

GENOMIC INFORMATION MOST USEFUL WHEN OTHER INFORMATION IS LACKING.

This is most obvious in the case of hard or very expensive to measure traits.

Sheep Genomics continued...

IMPUTING RESULTS OF HIGH DENSITY GENOTYPING FROM LOWER DENSITY CHIPS IS POTENTIALLY POWERFUL AND COST EFFECTIVE TECHNOLOGY

This is perhaps one of the most exciting possibilities to have come out of the discussions held at the workshop. Basically what it means is that for the lesser cost of low density SNP chips (e.g. 5K), it may be possible to impute the result of a higher density chip (e.g. 50K). This may mean that as breeders we will be able to screen a larger number of selection candidates either for selection or possibly for testing using a higher density chip. Or perhaps more importantly, imputation has the potential to make testing far cheaper.

At the conclusion of the workshop the following statement was released. I have included it to reinforce the point that despite the inclusion of genotypic data in the calculation of breeding values, outwardly they will appear the same to us as breeders. The difference will be in the accuracy, and the extent of that difference will depend on how much the genomic information adds to the existing phenotypic information.

'The Cattle & Sheep Genomics Research, Development & Extension Group believes that information from DNA tests will provide maximum benefit for breeders and commercial producers when incorporated as part of the scientifically proven and industry accepted tools for communicating genetic merit, namely Estimated Breeding Values (EBVs) or Australian Sheep Breeding Values (ASBVs), derived from the national genetic evaluation systems currently operating for beef and sheep, BREEDPLAN and Sheep Genetics. For some traits of economic importance it is likely that DNA markers will provide all or predominant information, however it still should be the aim to incorporate this information into the multi-trait genetic evaluations so that the correct emphasis can be given to the trait using appropriate selection index procedures. The EBVs or ASBVs containing DNA marker information should simply be called EBVs or ASBVs with nothing to distinguish that they may have molecular information included. In all other aspects of interpretation and reporting the breeding values should be treated the same as conventional breeding values and reporting should include accuracies and run dates.'

Where are we now?

The first phase of Sheep CRC/MLA Genomics Pilot Project is currently underway. Using a 50k SNP chip, that tests animals' genetic makeup at 50,000 locations spread across their chromosomes, the project is assessing 400 young sires that have been nominated by breeders. I am pleased to say the by far the largest representation (83 rams) is from the White Suffolk breed.

The purpose of this project is to work with breeders to confirm the accuracy, benefits and best ways to incorporate and use these new tools in breeding programs. Evaluation is underway as to the correlations between the molecular results and ASBV's for the same traits, as well as an assessment of a range of young sires for hard to measure traits such as shear force and intramuscular fat which effect eating quality

It is my understanding that 'trial ASBV's' for these young sires, that incorporate genomic information, will start being released in late July. The next phase of the project will be to 'prove' those 'trial ASBV's' against the phenotypic information collected on their progeny. Of course for the hard to measure carcase traits this will not be possible in our ram breeding operations, however a number of these young rams will be selected for the next round of the Sheep CRC Information Nucleus joinings allowing those traits to be measured.

As one speaker at the Genomics workshop put it, this is a "rapidly moving feast". I believe that this technology offers us huge potential benefits in more accurate selection improving genetic gain and in removing from our breeding programs animals that may have traits which are ultimately undesirable. I would hope that all White Suffolk breeders continue to stay abreast of the developments in this area and if it as useful as I believe it will be, make use of it in the future. Part of this engagement will be continually testing young and industry sires so if you are called on to provide DNA samples it will be in the best interest of the breed to assist where possible.

Steve Milne

Live Animal Assessment



DEPARTMENT OF
PRIMARY INDUSTRIES

farm
services

Aim: For producers to be able to accurately assess lambs for fatscore and estimate dressing percentage.

The aim of live animal assessment is to accurately select lambs within the required carcass weight and fatscore specifications.

Currently no method exists to estimate the Lean Meat Yield (LMY) of lambs, therefore producers are encouraged to monitor feedback from those processors that provide LMY estimations.

More accurate appraisal of the live lamb helps the producer and his agent to target specific markets.

Visual assessment of lambs as a mob or as they run through a drafting race, provides some useful information about skins, dags and seed infestation but it does not provide accurate assessment of fat cover or carcass weight. Therefore it is important that a method of weighing and fat scoring at least a representative portion of lambs for sale is required.

Where tight specifications exist it may be necessary to weigh and fatscore each lamb. This is a process that with the right equipment can be undertaken quickly and efficiently. Many producers are capable of assessing greater than 300 lambs per hour.

The successful marketing of even lots of lambs requires a consistent and professional approach. An accurate assessment of lambs will provide an estimate of the carcass weight, the fatscore and the skin quality of the lambs. Depending on the age of the lambs it may also be necessary to mouth them also.

Live animal assessment skills will be improved by experience and regular abattoir feedback. Liveweight scales, well designed and maintained yards and well trained and muzzled sheep dogs will also assist.

Fat scoring sheep and lambs

Fatscores provide an estimate of the total carcass fat cover of the lamb and are used to describe a key carcass trait of the lamb. These vary from condition scores which measure the physiological condition (i.e. nutritional status) of sheep.

Both are skills best learnt by practice and in the case of Fat scoring from feedback on the carcass performance of lambs.

Producers who are interested in developing Condition Scoring skills are referred to the Life Time Ewe Management course run by RIST and the Victorian DPI.

Fatscores range from 1 (0-5mm of tissue) and the leanest of the scores to 5 (greater than 21mm of tissue) and the fattest of the scores. See Table 1.0

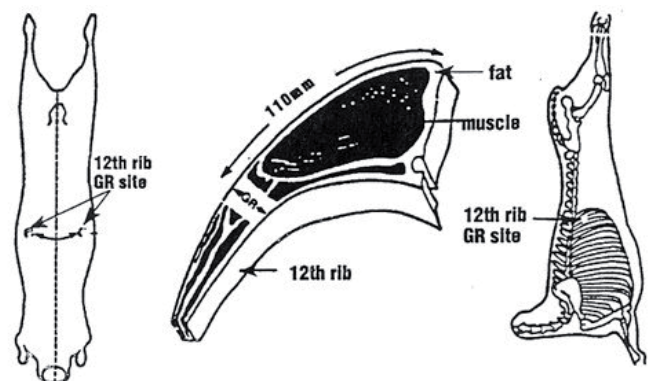
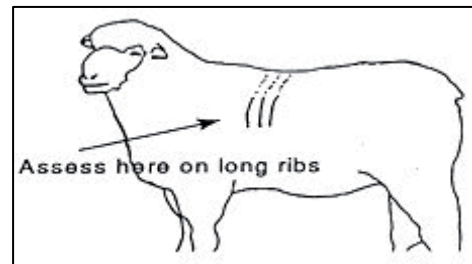
Fatscores are based on actual soft tissue depth at the GR site. The GR Site is 110 mm from the midline (spine) over the 12th rib. Most sheep have 13 ribs therefore the easiest way to find the 12th rib is to count one in from the last. The best site to feel when assessing fatness is over the long ribs where the GR site is measured on the carcass in the abattoir. Fat scores vary from score 1 (leanest) to score 5 (fattest).

To achieve a reliable score, have the lamb standing in a relaxed state, preferably in a race or liveweight scales. The animal will not be bruised if assessed in the correct manner by gentle palpation with the fingertips and thumb.

The assessor must make sure that their fingers are on the skin of the animal and that there is no wool between their fingers and the animal's skin. If wool is present this will cause the animal to feel fatter than it actually is.

To assess the fatness, the assessor places their thumb on the midline above the 12th rib. Generally if no spine can be felt then the lamb is likely to be a fatscore 5.

With the assessor holding their thumb in place over the midline of the animal, they slide their fingers over what is the eye muscle of the lamb. This is 110mm from the middle of the backbone on the 12th rib. With fingers in this position, fatscore is then determined by making a comparison with the palpation and the following descriptors.



AUSTRALIAN LAMB SCORES

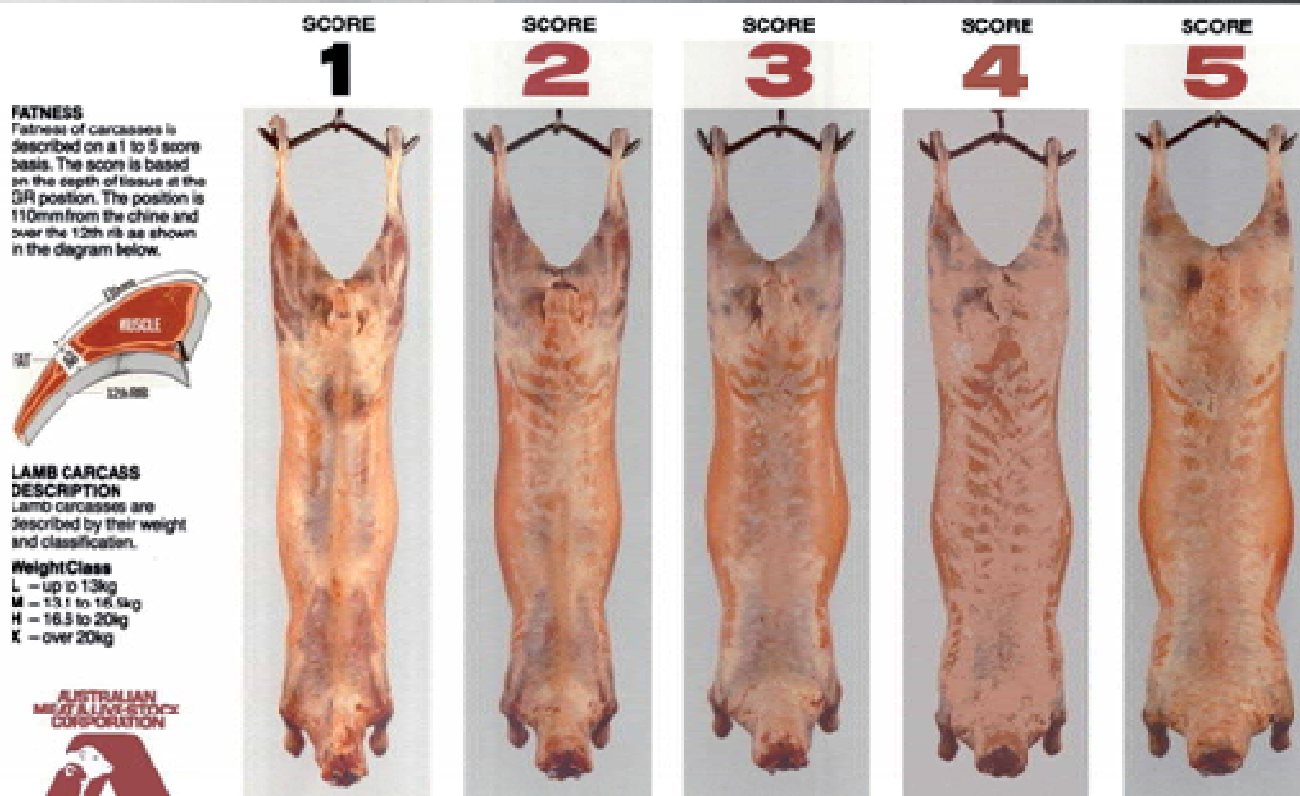


Table 1. Fat score rating and equivalent fat measurement (mm) over long ribs.

Score	Description	mm over rib
1	Indiv. ribs felt very easily, impossible to feel any tissue over the ribs	0-5
2	Indiv. ribs can still be felt easily but some tissue present	6-10
3	Indiv. ribs still identifiable but more rounded and tissue is easily felt	11-15
4	Barely possible to feel individual ribs and there is fluid movement of tissue	16-20
5	Indiv. ribs can not be felt, and the tissue is very fluid. Backbone can not be felt by thumb	21+

Estimating Carcase Weight

Estimated carcase weight is live weight adjusted by an estimated dressing percentage. For example:

$$\begin{aligned}
 &\text{Carcase weight} \\
 &= \text{live weight} \times \text{dressing percentage} \\
 &= 50 \text{ kg} \times 46 \% \\
 &= 23 \text{ kg}
 \end{aligned}$$

Live weight can be accurately and quickly measured using a modern set of lamb weighing scales. It is exceptionally difficult to estimate the live weight of lambs, particularly in the wool, without weighing.

Modern equipment including the use of electronic ear tags and associated weighing equipment can accurately and quickly give weights on a large number of lambs.

Although Australian lambs have an average dressing percentage of around 45-48 %, they vary considerably – from as high as 54 % to as low as 40 % depending on a wide range of conditions.

Guidelines for Dressing Percentages

These guidelines are based on accurate fat scoring and refer to: weaned second cross lambs, around 2-3 hours off feed, average skin wool length of about 50mm.

Important factors affecting dressing percentages

The percentages given below are estimated for hot standard carcase weight

Time off feed before live weighing

Dressing percentage increases by around:

- 1 percentage point after 4 hours off feed.
- 2 percentage points after 12 hours off feed
- 4 percentage points after 24 hours.

Fatness

Lean lambs have lower dressing percentages. Dressing percentage falls by an average of around 2 percent for each decrease in fat score. See figure 1

Fat Score	Dressing percentages for second cross lambs		Sheep	
	Weaned	Unweaned	Wethers	Ewes
1	41%	43%	39%	38%
2	43%	45%	41%	40%
3	45%	47%	43%	42%
4	47%	49%	45%	44%
5	49%	51%	47%	46%

Figure 1. Fat scores and dressing percentages

Skin weight

This varies according to wool length with short wool and freshly shorn lambs having a higher dressing percentage than woolly lambs. Dressing percentages are calibrated at 2" (50mm) length and dry. Skins that at 3" and just too wet to shear hold (i.e. have a dew on them) can hold between 0,2 and 0.5kg of water.

Sex

Wether lambs dress out about 1½ % lower than ewe lambs.

Breed

The breeding of the lamb can affect fat cover and muscling and hence, dressing percentage. Merino cross and merino lambs tend to have lower dressing percentages than second cross lambs by about 1.5 to 3.5 %. This is partly also related to the associated fat cover of the merino lambs.

Carcase trim and temperature

This varies with the carcasses trimmed to the Aus-meat "standard trim" which is hot standard carcase weight. This is defined by a trim that removes the thick skirts, kidneys, kidney knob, channel, udder and cod fat. If a non standard trim is applied and these tissues are retained then an increase of up to 4% can be obtained.

Chilled 'cold' lamb carcase weights are around 2-3 % less than hot carcase weight. The majority of processors in Victoria pay on a HSCW basis, however some still pay on a cold carcase weight basis.

Seasonal variation

It is possible to get a variation of ±3% due to the season. This is caused by the passage rate of the feedstuff that the animal is on. Animals grazed on lush green pastures that are high in moisture will have a higher dressing percentage than those on dry rank feed.

For more information contact;

Stuart Warner

Department of Primary Industries

Rutherglen

02 6030 4586

Stuart Warner - DPI Rutherglen
(excerpt taken from DPI's Practical Lamb Marketing Course).

Sydney Royal Show Results 2010

1st - 14th April 2010

Ram, under 1 year of age showing milk teeth only, shorn, born between 1 April - 30 June 2009.

1. TIMOR - PARKES NSW 2870

Ram, under 1 year of age showing milk teeth only, shorn, born on or after 1 July 2009.

1. TATTYKEEL 1 - OBERON NSW 2787
2. TATTYKEEL 1 - OBERON NSW 2787
3. JARRABAY - YASS NSW 2582

Ram, under 1 year of age, showing milk teeth only in wool.

1. TATTYKEEL 1 - OBERON NSW 2787

Pen of two rams, under 1 year of age showing milk teeth only, shorn.

1. TATTYKEEL 1 - OBERON NSW 2787

Ram, displaying 2 teeth and over, shorn.

1. TATTYKEEL 1 - OBERON NSW 2787
2. JARRABAY - YASS NSW 2582

Ram, displaying 2 teeth and over, in wool.

1. JARRABAY - YASS NSW 2582

CHAMPION RAM: TATTYKEEL RESERVE: TATTYKEEL

Ewe, under 1 year of age showing milk teeth only, shorn, born between 1 April - 30 June 2009.

1. TATTYKEEL 1 - OBERON NSW 2787
2. TIMOR - PARKES NSW 2870
3. JARRABAY - YASS NSW 2582

Ewe, under 1 year of age showing milk teeth only, shorn, born on or after 1 July 2009.

1. TATTYKEEL 1 - OBERON NSW 2787
2. JARRABAY - YASS NSW 2582
3. JARRABAY - YASS NSW 2582

Ewe, under 1 year of age showing milk teeth only, in wool.

1. TATTYKEEL 1 - OBERON NSW 2787

Pen of two ewes under 1 year of age showing milk teeth only, shorn.

1. JARRABAY - YASS NSW 2582

Ewe, displaying 2 teeth and over, shorn.

1. TATTYKEEL 1 - OBERON NSW 2787
2. JARRABAY - YASS NSW 2582
3. JARRABAY - YASS NSW 2582

CHAMPION EWE: TATTYKEEL RESERVE EWE: TATTYKEEL

RAS Group. Consisting of one ram and two ewes, showing milk teeth only, to be bred by the Exhibitor. To be selected from Exhibits in General Classes.

1. TATTYKEEL 1 - OBERON NSW 2787
2. JARRABAY - YASS NSW 2582

SIRES PROGENY GROUP

1. TATTYKEEL 1 - OBERON NSW 2787
2. JARRABAY - YASS NSW 2582

Objective Measurement Class for White Suffolk Sheep.

1. JARRABAY - YASS NSW 2582
2. TATTYKEEL 1 - OBERON NSW 2787
3. JARRABAY - YASS NSW 2582

MOST SUCCESSFUL EXHIBITOR: TATTYKEEL



Tattykeel - Most Successful Exhibitor - Sydney Royal Show 2010



Sydney Royal Show 2010 - Tattykeel - Champion Ram and Ewe



Sheep Producers urged to follow new Traceability Rules

Media Release July 5th 2010



Sheepmeat Council of Australia urges sheep producers to follow the new National Livestock Identification (NLIS) traceability rules that came into effect July 1st and also correctly complete National Vendor Declaration forms (NVDs).

“Under the new rules, all movements of sheep between properties with different Property Identification Codes (PICs) must be recorded, including movements to agistment properties, regardless of who owns or leases those properties,” said Kate Joseph, President of Sheepmeat Council of Australia.

The new rules are part of an ongoing effort to improve the current NLIS for sheep to achieve more efficient and effective traceability.

“Sheepmeat Council is committed to strengthening the current traceability system for sheep,” said Ms Joseph.

“Using visible tags and mob-based recording provides the most cost effective and practical way to meet traceability and market access requirements for Australian sheepmeat producers, but it relies on producers doing the right thing,” said Ms Joseph.

Sheepmeat Council cannot stress strongly enough that producers across Australia must adhere to the new changes and correctly complete NVDs, which underpin the integrity of the NLIS database.

“For the current system to work, we need all sheep producers across Australia to comply with the NLIS rules and complete their NVD forms accurately and in full,” said Ms Joseph.

Sheepmeat Council is a member of the NLIS (Sheep & Goats) Advisory Committee, which is the group that makes decisions on traceability

requirements for sheep in Australia. As a member of this Committee, Sheepmeat Council has played an integral role in focusing industry on a solution that meets traceability requirements domestically and internationally, whilst ensuring the most cost effective result for grass roots producers.

Under the new rules, owners will not need to record a mob-based movement on the database if they buy or sell sheep through a saleyard, or send them direct to an abattoir, feedlot or export depot, as it will be done for them.

As the state regulatory authorities are responsible for ensuring that verification arrangements are in place, it’s important producers get in touch with their local agency for any state specific requirements.

State agency contacts can be located at www.sheepmeatcouncil.com.au



Sydney Royal Show Champion Ram - Tattykeel



Sydney Royal Show Champion Ewe - Tattykeel

US Looks to Australian Lamb Genetics

MATT CAWOOD

14 MAY, 2010 10:26 AM

The eye muscle area of some American lamb breeds has shrunk by 40 per cent over the past 30 years, due in part to the US lamb industry's emphasis on the showing over genetic performance.

That's a situation that some in the US lamb business want to correct.

To do so, they have turned to the Australian lamb industry, which over the past decade has transformed the type of lambs it turns off and ramped up business profitability.

Last week a group of Ohio State University researchers and north-eastern US lamb producers were in Armidale, where the heart of the nation's livestock genetics databases are housed in and around the University of New England.

Professor of Meat Science at Ohio State, Henry Zerby, said the US lamb flock could only produce about half the lamb eaten in the US each year, despite lamb consumption sitting at a modest 0.5 kilograms per person per year since the 1990s.

(Americans were not always beef-focused. In 1945 the nation ate 500 million kilograms of lamb, but this had shrunk to 84m by 2006 despite a much bigger population.)

Part of the challenge in stimulating greater US lamb consumption is the lack of consistency in the US turnoff, Prof. Zerby said.

"One of the reasons that consumers like Australian and New Zealand lamb is that it is a lot more consistent."

"I think that goes back to LambPlan and a consistent genetic base. We have a lot more more breeds in the United States, a lot of differences in size and scale and production systems that lead to problems in the marketplace."

A core problem for the US lamb industry is that its genetic direction has been decided in the showing, Prof. Zerby said.

Another member of the tour group, Ohio State nutritionist Associate Professor Francis Fluharty, said the

Poll Dorsets yarded by Armidale producer Arthur Gates for the tour group displayed "the kind of genetics we had in Dorsets 30-40 years ago".

"Because of the focus on show ribbons in the industry, we're now down about 40 per cent on eye muscle area from those times."

One of the ambitions of the Ohio State researchers is to dust off the small US performance recording program and give it the prominence it has among several lamb breeds in Australia.

"Performance recording does a lot of things, and one of them is letting the producer know where they are. Our producers don't even know where they are to go forward from," Prof. Zerby said.

"But it also lets you identify the sheep that carry the traits you want and lets you breed towards those traits faster."

"We're most interested in carcase merit, but also in worm resistance, because we have trouble with our climate and worm resistance is a real natural fit with us."

Prof. Fluharty said some lamb producers in the US north-east are now drenching lactating ewe flocks every 28 days.

Mr Gates' flock, Pollambi Poll Dorsets, has consistently had more than half of the top 10 rams for worm resistance in the Sheep Genetics database, which along with award-winning carcase traits makes the flock of considerable interest to the Ohio State researchers.

Ohio State, which maintains the biggest lamb production research group in the US, is also looking at the much wider picture of how lamb can perform financially and environmentally into the future.

Prof. Zerby said ethanol production had changed the economics of grain feeding for US livestock producers.

"We've seen more of a commitment to using pastures and grass, which Mother Nature developed sheep to do and we got away from a little bit."

"These genetics allow us to get into that marketplace a little bit quicker, a bit easier."



Photo Courtesy Julie Klante "Wesswood" stud WA